

CORNER RECORD

Document Number CR-01-178

City of _____

County of San Joaquin, California

Brief Legal Description ESCALON-BELOTA ROAD 185' ± N/O ELM ST.

	CORNER TYPE	COORDINATES (Optional)
	Government Corner <input type="checkbox"/> Control <input type="checkbox"/>	N. _____
	Meander <input type="checkbox"/> Property <input type="checkbox"/>	E. _____
	Rancho <input type="checkbox"/> Other <input checked="" type="checkbox"/>	Zone _____ NAD27 <input type="checkbox"/> NAD83 <input type="checkbox"/>
	Date of Survey <u>OCTOBER 8, 2001</u>	NAD83 Epoch _____
		Elev. _____
	Vert. Datum: NGVD29 <input type="checkbox"/> NAVD88 <input type="checkbox"/>	
	Meas. Units: Metric <input type="checkbox"/> Imperial <input checked="" type="checkbox"/>	

Corner - Left as found Found and tagged Established Reestablished Rebuilt

Identification and type of corner found: Evidence used to identify or procedure used to establish or reestablish the corner: SET PK NAIL AND WASHER STAMPED "S.J. CO.". REESTABLISHED LOCATION PER SWING TIES ON CR-00-179. SEE SKETCH ON BACKSIDE.

A description of the physical condition of the monument as found and as set or reset: SET MONUMENT. SEE SKETCH ON BACKSIDE.

SURVEYOR'S STATEMENT

This Corner Record was prepared by me or under my direction in conformance with the Land Surveyors' Act on OCTOBER 29, 2001.

Signed Manuel Solano L.S. or R.C.E. Number C30890



COUNTY SURVEYOR'S STATEMENT

This Corner Record was received October 30, 2001 and examined and filed November 7, 2001.

Signed Thomas M. Gau R.C.E. No. 26994

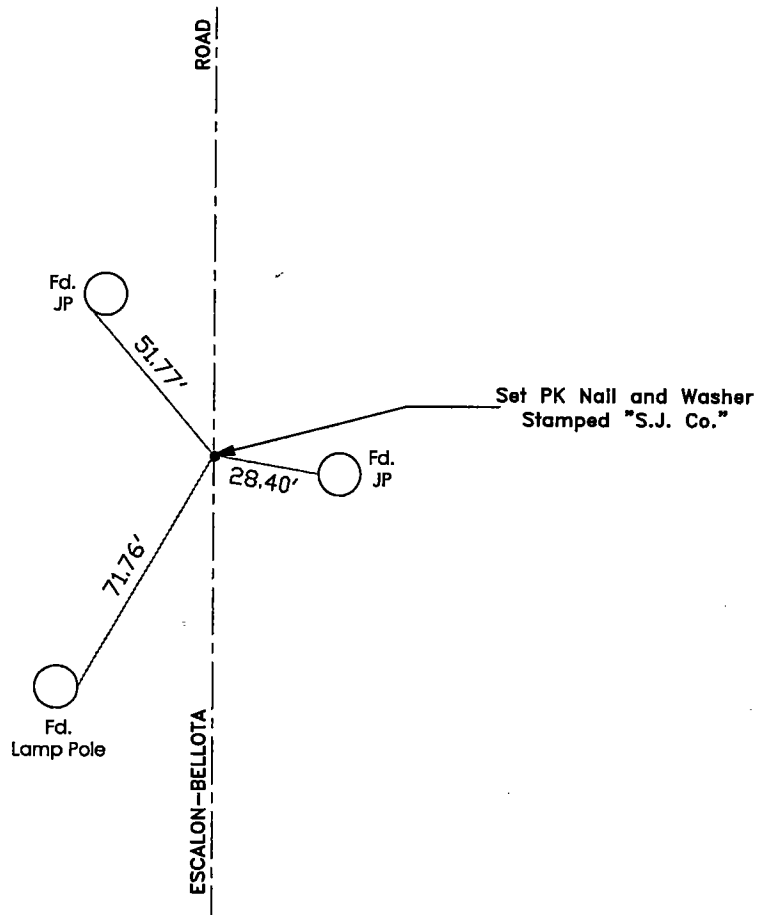
For Title Interim County Surveyor



County Surveyor's Comment _____



N.T.S.



"No Attempt Was Made To Verify Monument(s)"

- FP=Fence Post
- GP=Guy Post
- JP=Joint Pole
- PP=Power Pole
- SP=Service Pole
- TP=Telephone Pole
- N.T.S.=Not To Scale
- Fd.=Conc. Nails with Brass Washers Stamped "S.J. Co.", unless otherwise noted