

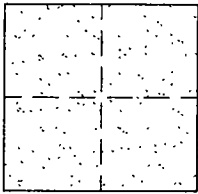
CORNER RECORD

Document Number CR-01-163

City of _____

County of San Joaquin, California

Brief Legal Description ESCALON-BELLOTA ROAD 1076' ± S/O DODDS RD.



CORNER TYPE

- Government Corner Control
- Meander Property
- Rancho Other

Date of Survey OCTOBER 8, 2001

COORDINATES (Optional)

N. _____
 E. _____
 Zone _____ NAD27 NAD83
 NAD83 Epoch _____
 Elev. _____
 Vert. Datum: NGVD29 NAVD88
 Meas. Units: Metric Imperial

Corner - Left as found Found and tagged Established Reestablished Rebuilt

Identification and type of corner found: Evidence used to identify or procedure used to establish or reestablish the corner: SET PK NAIL AND WASHER STAMPED "S.J. CO.". REESTABLISHED LOCATION PER SWING TIES ON CR-00-183. SEE SKETCH ON BACKSIDE.

A description of the physical condition of the monument as found and as set or reset: SET MONUMENT. SEE SKETCH ON BACKSIDE.

SURVEYOR'S STATEMENT

This Corner Record was prepared by me or under my direction in conformance with the Land Surveyors' Act on OCTOBER 29, 2001.

Signed Manuel Solario L.S. or R.C.E. Number C30890

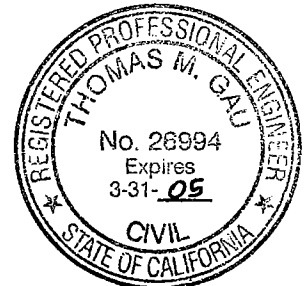


COUNTY SURVEYOR'S STATEMENT

This Corner Record was received October 30, 2001 and examined and filed November 7, 2001.

Signed Thomas M. Gau R.C.E. No. 26994

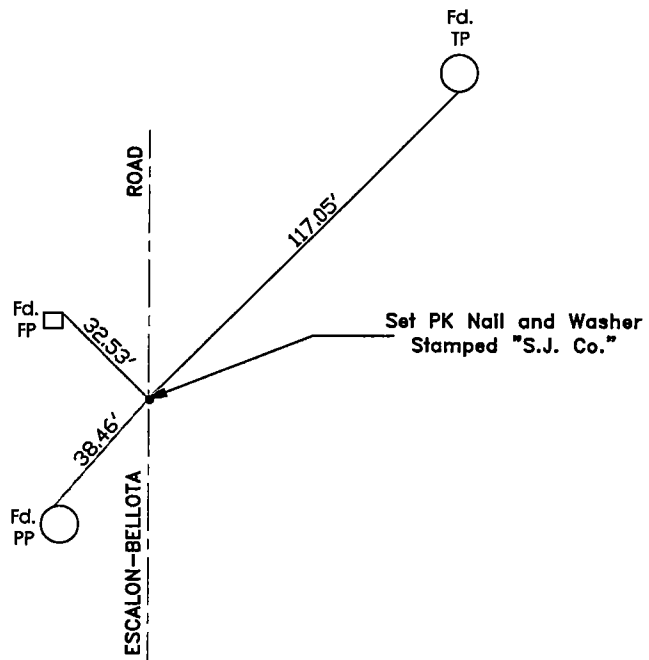
For Title Interim County Surveyor



County Surveyor's Comment _____



N.T.S.



"No Attempt Was Made To Verify Monument(s)"

FP=Fence Post
GP=Guy Post
JP=Joint Pole
PP=Power Pole
SP=Service Pole
TP=Telephone Pole
N.T.S.=Not To Scale
Fd.=Conc. Nails with Brass Washers Stamped
"S.J. Co.", unless otherwise noted