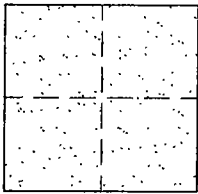


CORNER RECORD

Document Number CR-01-131
County of San Joaquin, California

City of _____

Brief Legal Description EAST MAIN STREET AT THE INTERSECTION OF NEW WATER LN.



CORNER TYPE

Government Corner Control
Meander Property
Rancho Other

Date of Survey JULY 12, 2001

COORDINATES (Optional)

N. _____
E. _____
Zone _____ NAD27 NAD83
NAD83 Epoch _____
Elev. _____
Vert. Datum: NGVD29 NAVD88
Meas. Units: Metric Imperial

Corner - Left as found Found and tagged Established Reestablished Rebuilt

Identification and type of corner found: Evidence used to identify or procedure used to establish or reestablish the corner:
FOUND PIN/WASHER (NOT TAGGED). CONFIRMED LOCATION PER SWING TIES ON CR-01-91. SEE SKETCH ON BACKSIDE.

A description of the physical condition of the monument as found and as set or reset:
FOUND MONUMENT IN GOOD CONDITION. SEE SKETCH ON BACKSIDE.

SURVEYOR'S STATEMENT

This Corner Record was prepared by me or under my direction in conformance with the Land Surveyors' Act on OCTOBER 29, 2001.

Signed Manuel Solord L.S. or R.C.E. Number C30890



COUNTY SURVEYOR'S STATEMENT

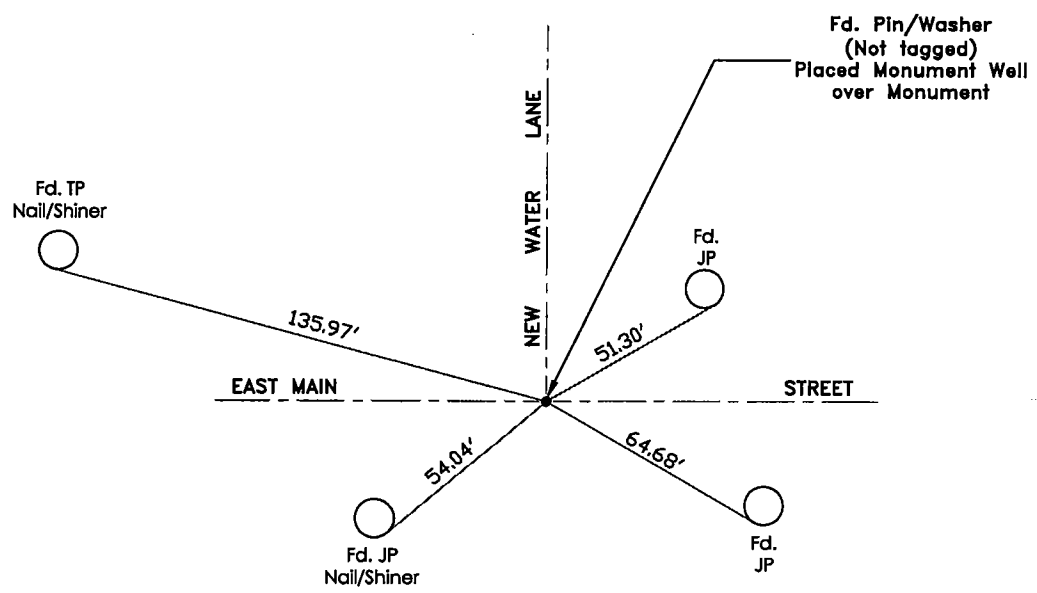
This Corner Record was received October 30, 2001 and examined and filed November 7, 2001.

Signed Thomas M. Gau R.C.E. No. 26994

For Title Interim County Surveyor



County Surveyor's Comment _____



"No Attempt Was Made To Verify Monument(s)"

- FP=Fence Post
- GP=Guy Post
- JP=Joint Pole
- PP=Power Pole
- SP=Service Pole
- TP=Telephone Pole
- N.T.S.=Not To Scale
- Fd.=Conc. Nails with Brass Washers Stamped "S.J. Co.", unless otherwise noted