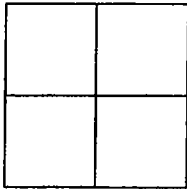


CORNER RECORD

Document Number 01-116

City of STOCKTON County of SAN JOAQUIN, California

Brief Legal Description FRESNO AVENUE AT WASHINGTON STREET
BOOK 32 OF SURVEYS, PAGE 49, SAN JOAQUIN COUNTY RECORDS



Government Corner Control
Meander Property
Rancho Other
Date of Survey 7-18-01

COORDINATES (Optional)

N. 2168120.837
E. 6327241.409
Zone 3 NAD27 NAD83
NAD83 Epoch 1991.35
Elev. 5.89
Vert. Datum: NGVD29 NAVD88
Meas. Units: Metric Imperial

Corner - Left as found Found and tagged Established Reestablished Rebuilt

Identification and type of corner found: Evidence used to identify or procedure used to establish or reestablished the corner:
FOUND BRASS DISK STAMPED "7S-5" IN MONUMENT BOX MARKING THE CITY OF STOCKTON

CONTROL MONUMENT AT THE INTERSECTION OF FRESNO AVE. AND WASHINGTON ST. AS SHOWN FOR RECORD
IN BOOK 29 OF SURVEYS AT PAGE 61, SAN JOAQUIN COUNTY RECORDS PRIOR TO BEING DESTROYED.

COORDINATES SHOWN ABOVE ARE BASED ON BOOK 33 OF SURVEYS AT PAGE 20. ELEVATION SHOWN IS
BASED ON THE CITY OF STOCKTON BENCHMARK LISTING REVISED MARCH 2000.

A description of the physical condition of the monument as found and as set or reset: _____

THE MONUMENT WILL BE DESTROYED DUE TO PAVEMENT RECONSTRUCTION.

SET NAILS TAGGED LS6953 AS SHOWN ON SKETCH.

This Corner Record was prepared by me or under my direction in conformance with the Land Surveyors' Act on August 16, 2001.

Signed [Signature] L.S. 6953

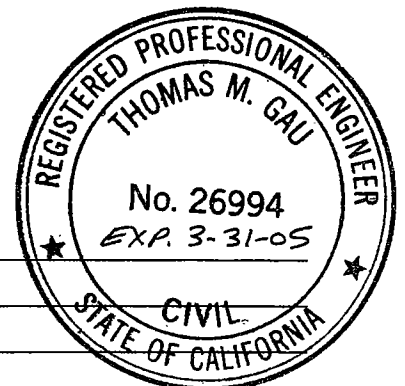


COUNTY SURVEYOR'S STATEMENT

This Corner Record was received SEPT. 7, 2001 and examined and filed October 2, 2001.

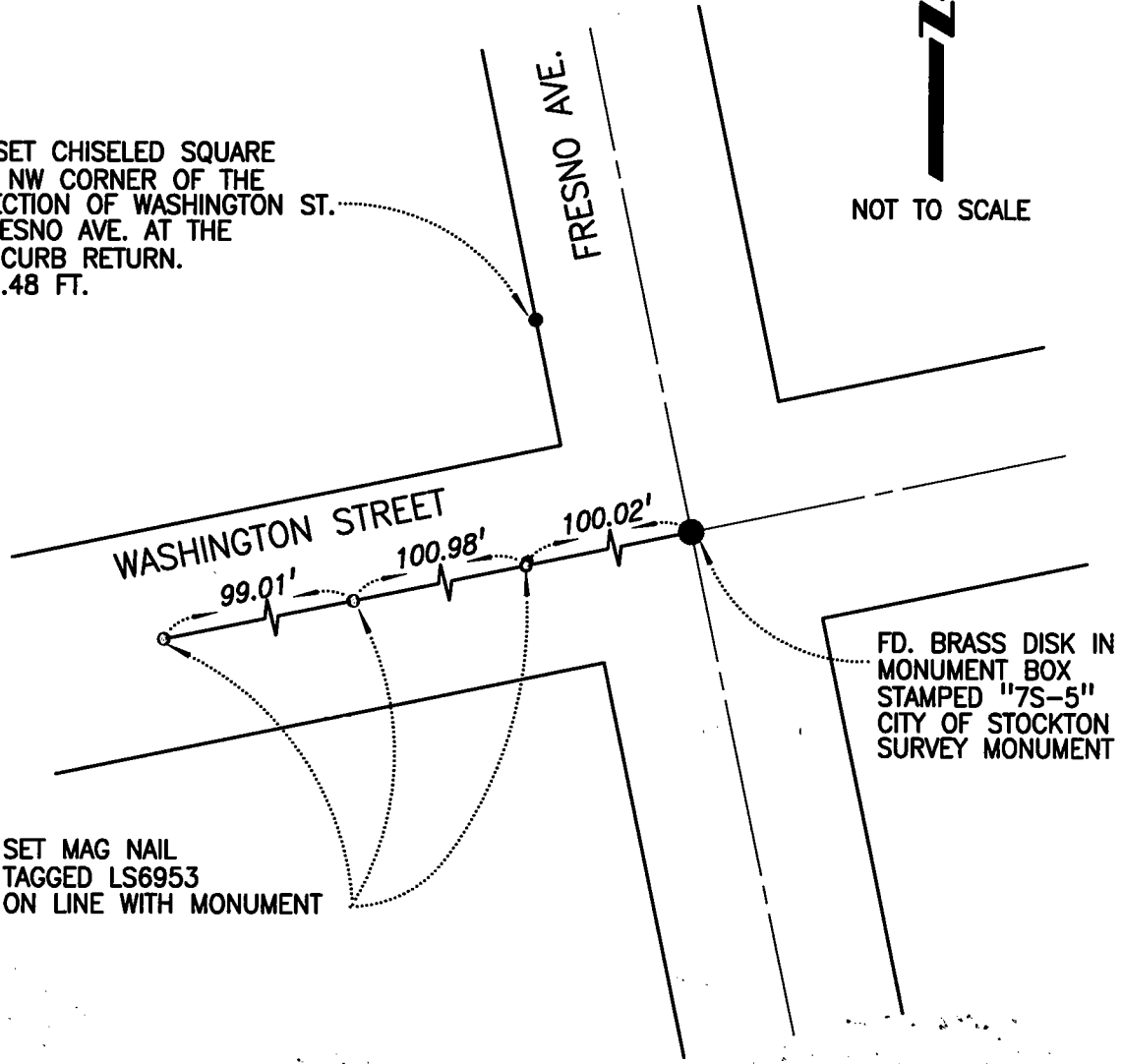
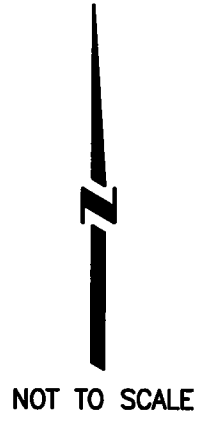
Signed Thomas M. Gau R.C.E. No. 26994

Title For County Surveyor



County Surveyor's Comment _____

TBM: SET CHISELED SQUARE
AT THE NW CORNER OF THE
INTERSECTION OF WASHINGTON ST.
AND FRESNO AVE. AT THE
NORTH CURB RETURN.
ELEV. 5.48 FT.



SET MAG NAIL
TAGGED LS6953
ON LINE WITH MONUMENT

FD. BRASS DISK IN
MONUMENT BOX
STAMPED "7S-5"
CITY OF STOCKTON
SURVEY MONUMENT

NOTE: FOUND MONUMENT IS NOT
VERIFIED AS BEING THE CENTERLINE
OF THE STREET RIGHTS-OF-WAY.