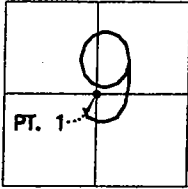


CORNER RECORD

Document Number 01-114

City of MANTECA County of SAN JOAQUIN, California

Brief Legal Description CENTER OF SECTION 9, T.2S., R.7E., M.D.B.&M.



T.2 S., R. 7 E.,
M.D.B.&M.

CORNER TYPE

Government Corner Control
Meander Property
Rancho Other
Date of Survey 8-21-01

COORDINATES (Optional)

N. _____
E. _____
Zone _____ NAD27 NAD83
NAD83 Epoch _____
Elev. _____
Vert. Datum: NGVD29 NAVD88
Meas. Units: Metric Imperial

Corner - Left as found Found and tagged Established Reestablished Rebuilt

Identification and type of corner found: Evidence used to identify or procedure used to establish or reestablished the corner:
POINT 1: BRASS DISK STAMPED R.E. 9338 IN MONUMENT BOX MARKING THE CENTER OF SECTION 9 AT THE CENTERLINE OF WOODWARD AVENUE AS SHOWN FOR RECORD IN BOOK 35 OF MAPS AND PLATS AT PAGE 4, SAN JOAQUIN COUNTY RECORDS WAS DESTROYED DUE TO PAVEMENT RECONSTRUCTION AND REESTABLISHED USING THE SWING TIES SET PRIOR TO THE MONUMENT BEING DESTROYED AS SHOWN ON PREVIOUS CORNER RECORD 01-29.

A description of the physical condition of the monument as found and as set or reset:
SET 2 1/2" BRASS DISK STAMPED "LS 6953 AUGUST 2001" IN MONUMENT WELL.

SURVEYOR'S STATEMENT

This Corner Record was prepared by me or under my direction in conformance with the Land Surveyors' Act on AUGUST 21, 2001.

Signed [Signature] L.S. 6953



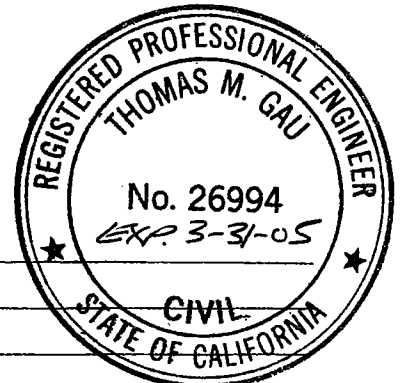
COUNTY SURVEYOR'S STATEMENT

This Corner Record was received AUGUST 23, 2001 and examined and filed September 19, 2001.

Signed [Signature] R.C.E. No. 26994

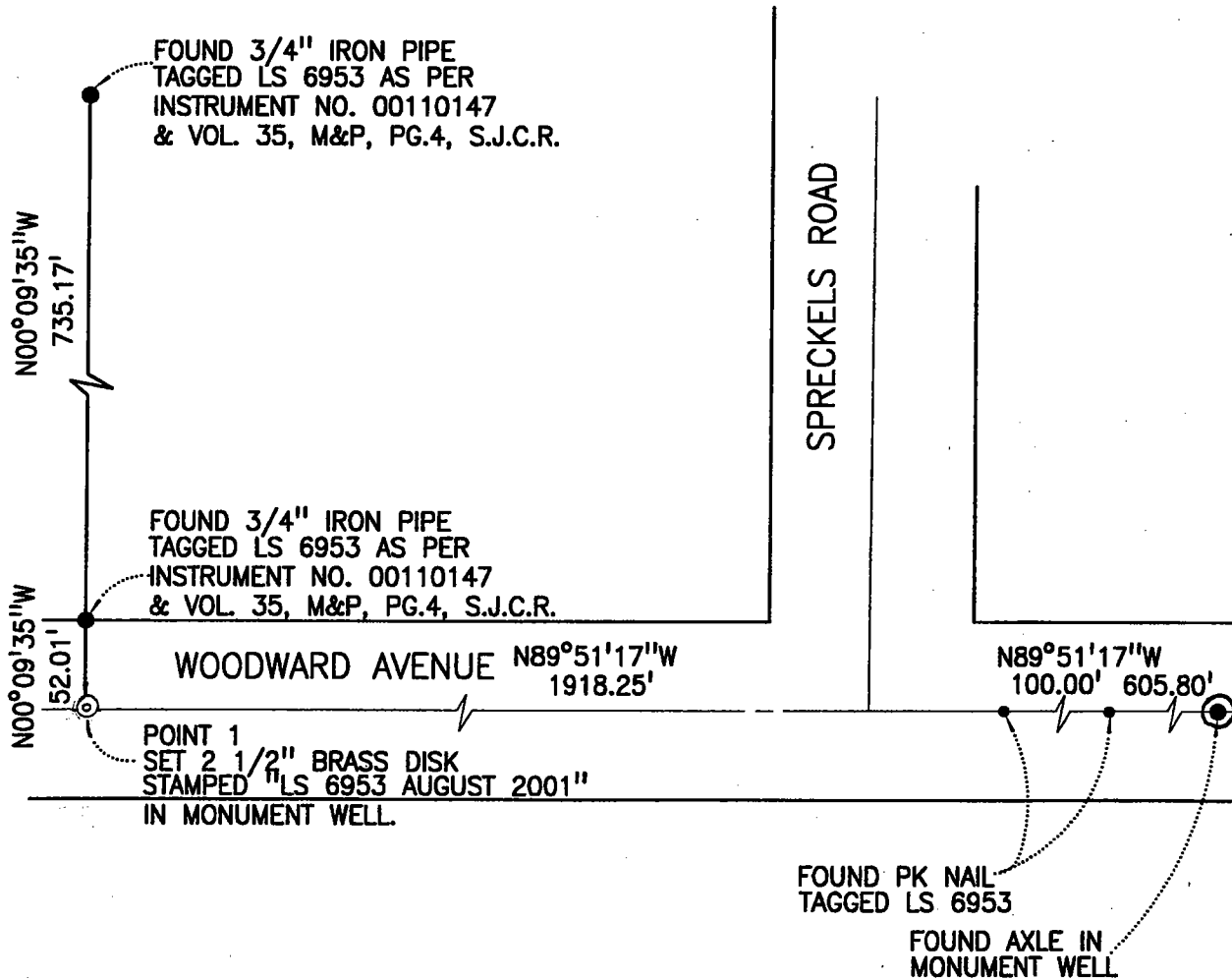
Title _____ County Surveyor

County Surveyor's Comment _____





NOT TO SCALE



NOTE: FOUND MONUMENTS ARE NOT
VERIFIED AS BEING THE CENTERLINE
OF THE STREET RIGHTS-OF-WAYS.