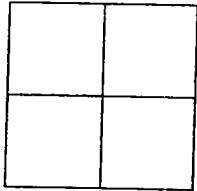


CORNER RECORD

Document Number 01-604

City of TRACY County of SAN JOAQUIN, California

Brief Legal Description W. 22nd STREET AT HOLLY DRIVE



Government Corner Control
Meander Property
Rancho Other
Date of Survey 2-27-01

COORDINATES (Optional)

N. _____
E. _____
Zone _____ NAD27 NAD83
NAD83 Epoch _____
Elev. _____
Vert. Datum: NGVD29 NAVD88
Meas. Units: Metric Imperial

Corner - Left as found Found and tagged Established Reestablished Rebuilt

Identification and type of corner found: Evidence used to identify or procedure used to establish or reestablished the corner:
FOUND CONCRETE MONUMENT IN MONUMENT WELL ON W. 22nd STREET APPROXIMATELY 26 FEET WEST OF THE CENTERLINE OF HOLLY DRIVE.

A description of the physical condition of the monument as found and as set or reset:
FOUND CONCRETE MONUMENT IN MONUMENT WELL WILL BE DESTROYED DUE TO PAVEMENT RECONSTRUCTION. SET NAILS TAGGED LS6953 AS SHOWN ON SKETCH.

This Corner Record was prepared by me or under my direction in conformance with the Land Surveyors' Act on April 4, 2001.

Signed [Signature] L.S. 6953



COUNTY SURVEYOR'S STATEMENT

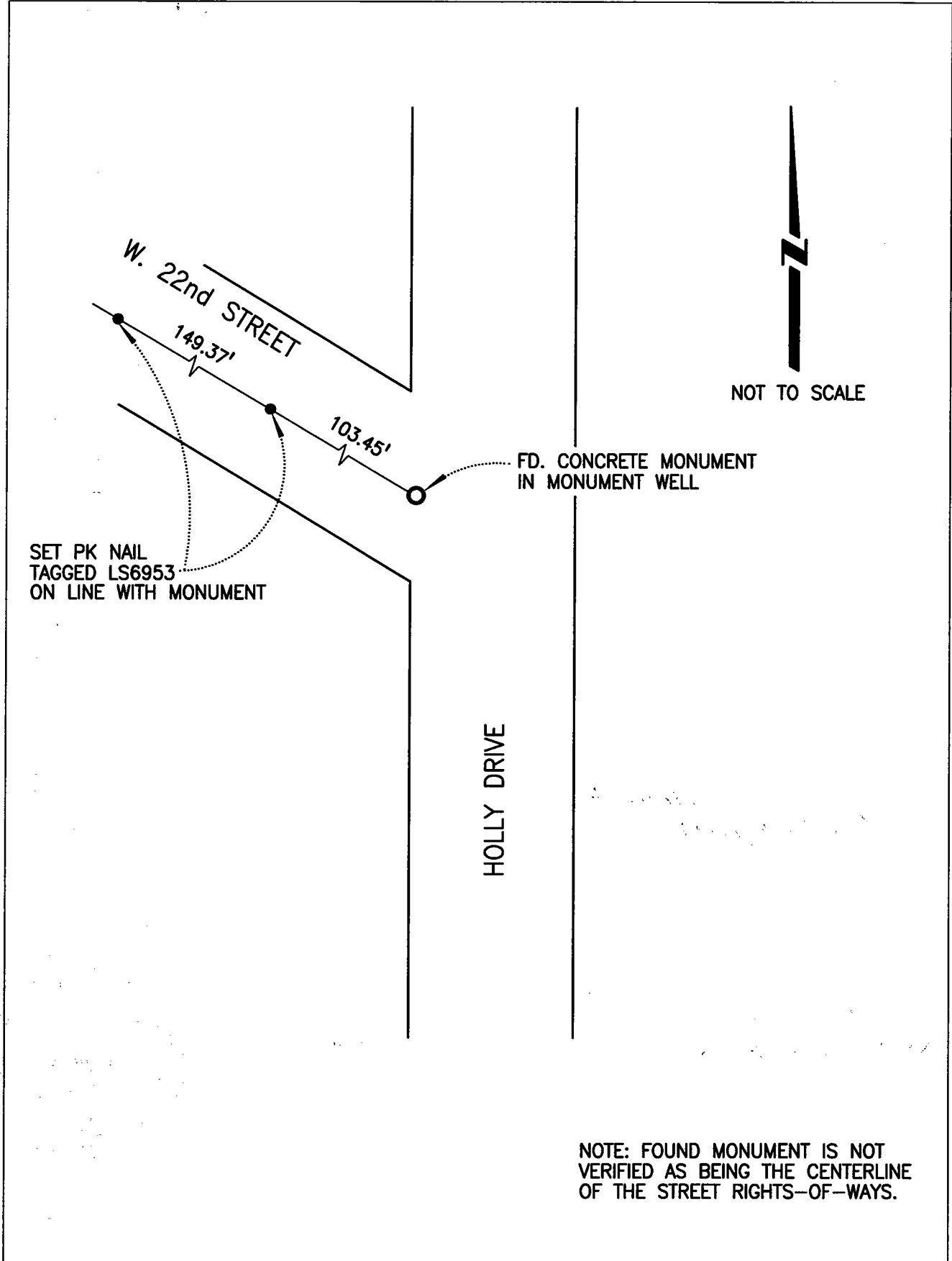
This Corner Record was received APRIL 4, 2001 and examined and filed APRIL 9, 2001.

Signed [Signature] R.C.E. No. 28054

Title County Surveyor



County Surveyors Comment _____



W. 22nd STREET

149.37'

103.45'

FD. CONCRETE MONUMENT
IN MONUMENT WELL

SET PK NAIL
TAGGED LS6953
ON LINE WITH MONUMENT

HOLLY DRIVE



NOT TO SCALE

NOTE: FOUND MONUMENT IS NOT
VERIFIED AS BEING THE CENTERLINE
OF THE STREET RIGHTS-OF-WAYS.