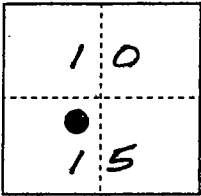


CORNER RECORD

City of Lodi

Document Number 01-89  
County of San Joaquin, California

Brief Legal Description RM 15.!! = Caltrans project control survey monument.  
T3N, R6E, MDB & M



CORNER TYPE

Government Corner  Control   
Meander  Property   
Rancho  Other   
Date of Survey 10-3-00

COORDINATES (Optional)

N. \_\_\_\_\_  
E. \_\_\_\_\_  
Zone \_\_\_\_\_ NAD27  NAD83   
NAD83 Epoch \_\_\_\_\_  
Elev. \_\_\_\_\_  
Vert. Datum: NGVD29  NAVD88   
Meas. Units: Metric  Imperial

Corner - Left as found  Found and tagged  Established  Reestablished  Rebuilt

Identification and type of corner found: Evidence used to identify or procedure used to establish or reestablish the corner:  
Found Caltrans brass disk stamped "15.!!" in concrete at  
pavement surface; project control survey monument per  
28 RS 128 M, SJCR.

A description of the physical condition of the monument as found and as set or reset:  
Monument found in good condition.

SURVEYOR'S STATEMENT

This Corner Record was prepared by me or under my direction in conformance with the Land Surveyors' Act on 10-3, 2000.

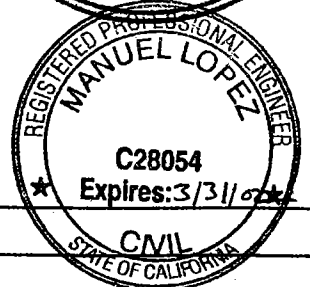
Signed Ira G. Pearson, Jr. L.S. or R.C.E. Number 7396

COUNTY SURVEYOR'S STATEMENT

This Corner Record was received FEB. 28, 2001 and examined and filed MARCH 5, 2001.

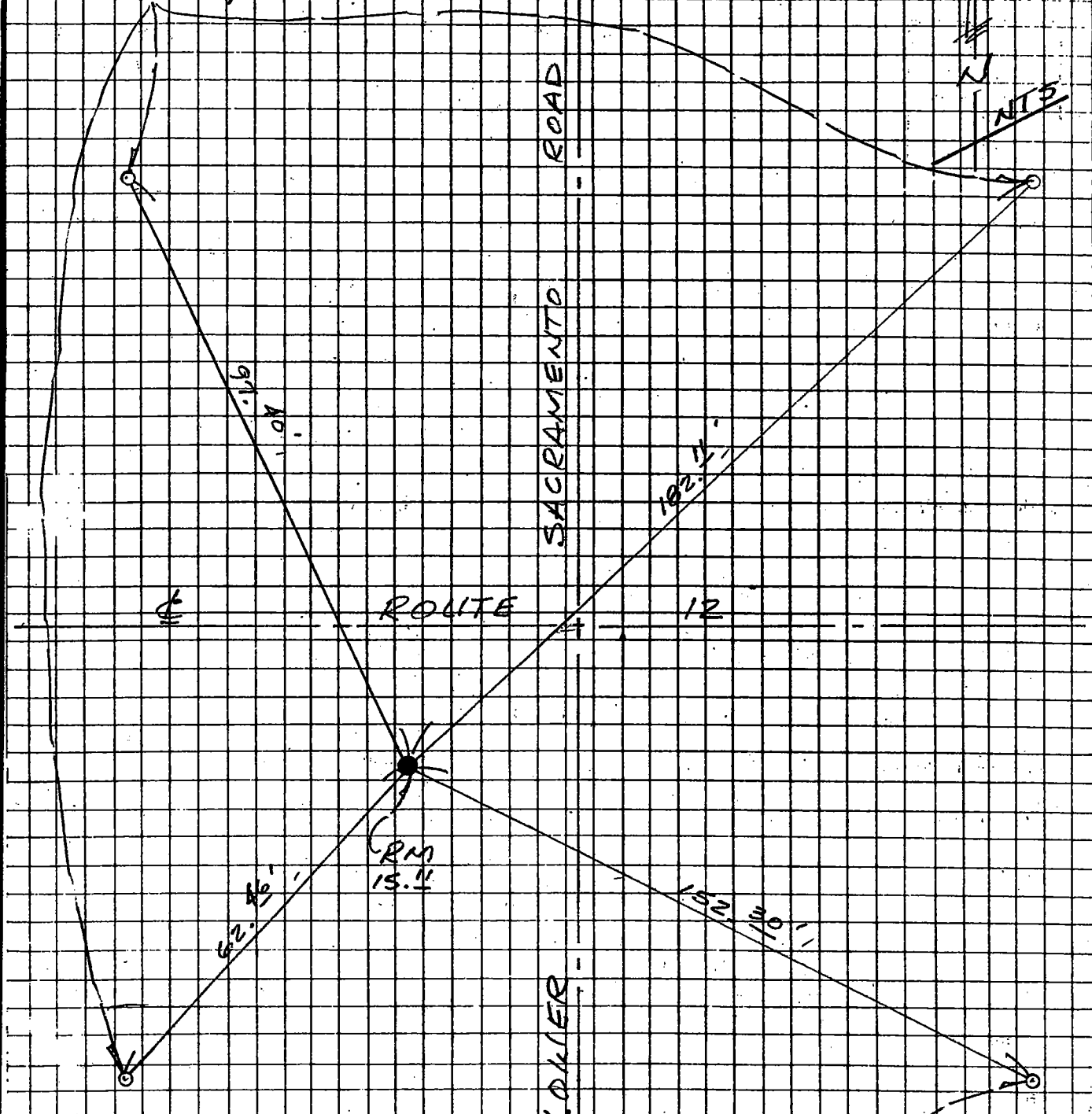
Signed Manuel Lopez R.C.E. No. 28054  
Title County Surveyor

County Surveyors Comment \_\_\_\_\_



(D.D. Sheet No. 15)

Set PK nail in sidewalk joint at center of wheel chair ramp.



NOTE:  
All PK swing ties are with "Caltrans" brass tag.

Set PK nail in curb joint at back of curb at MOC.