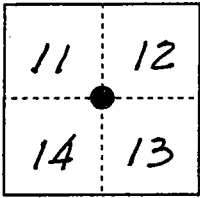


CORNER RECORD

City of Lodi

Document Number 01-79
County of San Joaquin, California

Brief Legal Description NE corner section 14, T3N, R6E, MDB&M



CORNER TYPE

Government Corner Control
Meander Property
Rancho Other
Date of Survey 10-3-00

COORDINATES (Optional)

N. _____
E. _____
Zone _____ NAD27 NAD83
NAD83 Epoch _____
Elev. _____
Vert. Datum: NGVD29 NAVD88
Meas. Units: Metric Imperial

Corner - Left as found Found and tagged Established Reestablished Rebuilt

Identification and type of corner found: Evidence used to identify or procedure used to establish or reestablish the corner:

Found Caltrans brass disk in survey well.

A description of the physical condition of the monument as found and as set or reset:

Monument found in good condition.

SURVEYOR'S STATEMENT

This Corner Record was prepared by me or under my direction in conformance with the Land Surveyors' Act on 10-3, 2000.

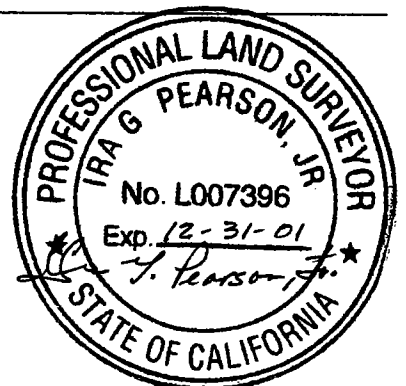
Signed Ira G. Pearson, Jr. L.S. or P.C.E. Number 7396

COUNTY SURVEYOR'S STATEMENT

This Corner Record was received FEB. 28, 2001 and examined and filed MARCH 5, 2001.

Signed Manuel Lopez R.C.E. No. 28054
Title County Surveyor

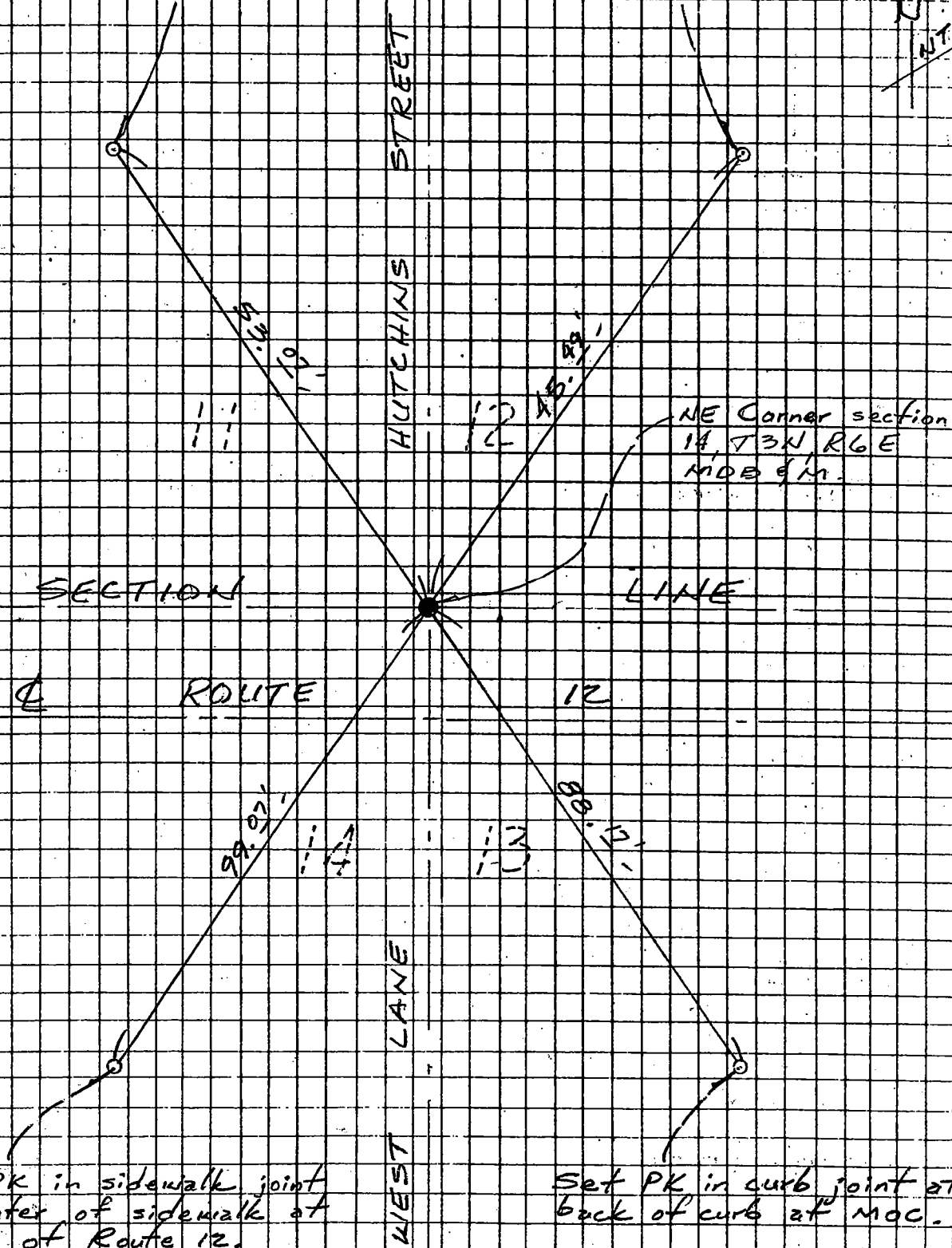
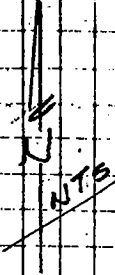
County Surveyors Comment _____



(D.D. Sheet No. 15)

NOTE:
 All PK swing
 ties are with
 "Calltrans" brass
 tag.

Set PK in curb joint at
 back of curb at MOC.



Set PK in sidewalk joint
 at center of sidewalk at
 BCR of Route 12.

Set PK in curb joint at
 back of curb at MOC.