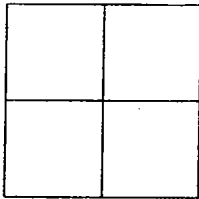


CORNER RECORD

Document Number 01-71

City of ESCALON County of SAN JOAQUIN, California

Brief Legal Description MONUMENTS ON NORTH LINE OF TRACT NO. 1136, ALMOND BLOSSOM ESTATES, UNIT NO. 2, FILED IN BOOK 21 OF MAPS AND PLATS, PAGE 58, SAN JOAQUIN COUNTY RECORDS.



CORNER TYPE

Government Corner Control
Meander Property
Rancho Other
Date of Survey 1-31-2001

COORDINATES (Optional)

N. _____
E. _____
Zone _____ NAD27 NAD83
NAD83 Epoch _____
Elev. _____
Vert. Datum: NGVD29 NAVD88
Meas. Units: Metric Imperial

Corner - Left as found Found and tagged Established Reestablished Rebuilt

Identification and type of corner found: Evidence used to identify or procedure used to establish or reestablished the corner: FOUND PROPERTY CORNER MONUMENTS ALONG NORTH LINE OF ALMOND BLOSSOM ESTATES, UNIT NO. 2, FILED IN BOOK 21 OF MAPS AND PLATS AT PAGE 58, SAN JOAQUIN COUNTY RECORDS WERE DESTROYED DUE TO THE CONSTRUCTION OF AN IRRIGATION PIPELINE. MONUMENTS WERE RE-ESTABLISHED USING THE SWING TIES SET PRIOR TO THE MONUMENTS BEING DESTROYED AS SHOWN ON PREVIOUS CORNER RECORD 01-32.

A description of the physical condition of the monument as found and as set or reset: SET 3/4" IRON PIPE 24" LONG TAGGED LS 6953.

SURVEYOR'S STATEMENT

This Corner Record was prepared by me or under my direction in conformance with the Land Surveyors' Act on FEBRUARY 6, 2001.

Signed [Signature] L.S. Number 6953



COUNTY SURVEYOR'S STATEMENT

This Corner Record was received February 6, 2001 and examined and filed March 1, 2001.

Signed [Signature] R.C.E. No. 28054
Title County Surveyor



County Surveyors' Comment _____



SCALE: 1"=100'

MONUMENTS (MON) FOUND & SET

MONUMENT DESCRIPTION	
MON 1	FD 1/2" IRON PIPE, CONTROL POINT
MON 2	FD 1/2" IRON PIPE, CONTROL POINT
MON 3	FD 1/2" PIN NO TAG
MON 4	FD 3/4" IRON PIPE RCE 6152
MON 5	FD 3/4" IRON PIPE RCE 6152
MON 6	SET 3/4" IRON PIPE LS 6953
MON 7	SET 3/4" IRON PIPE LS 6953
MON 8	SET 3/4" IRON PIPE LS 6953
MON 9	SET 3/4" IRON PIPE LS 6953
MON 10	SET 3/4" IRON PIPE LS 6953
MON 11	SET 3/4" IRON PIPE LS 6953
MON 12	SET 3/4" IRON PIPE LS 6953

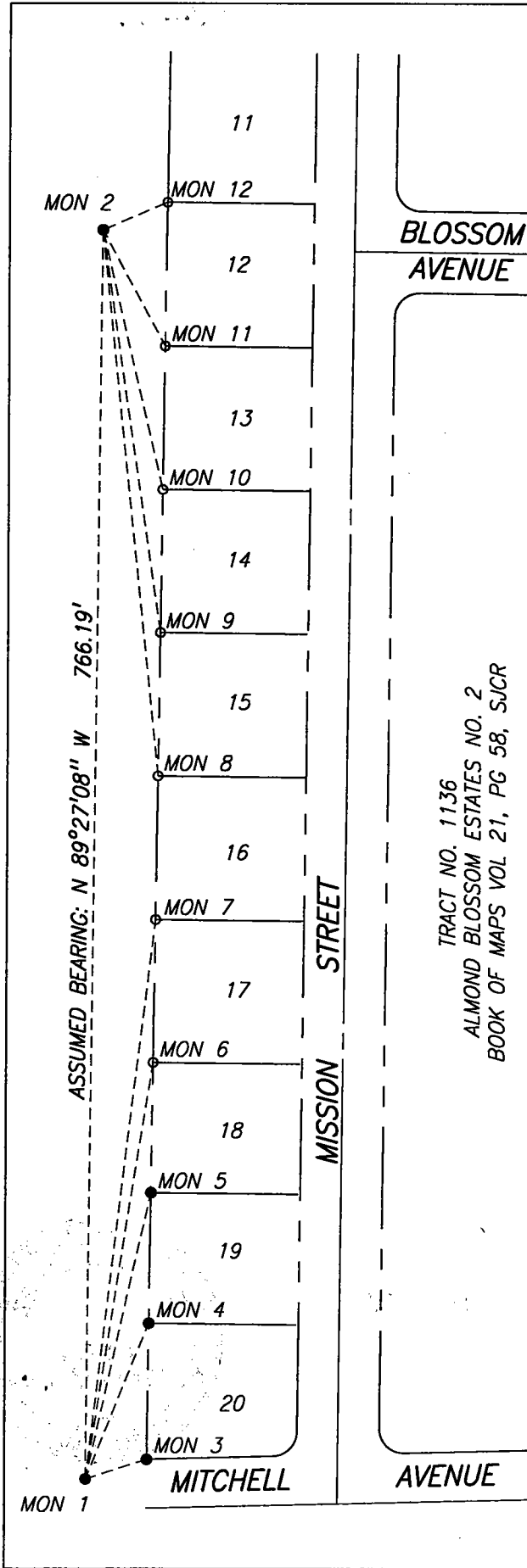
TIES FROM CONTROL POINTS

TIES FROM MON 1		
TO	BEARING	DISTANCE
MON 2	S 89°27'08" E	766.19'
MON 3	S 17°46'11" E	38.94'
MON 4	S 68°06'56" E	102.37'
MON 5	S 77°23'50" E	179.24'
MON 6	S 81°04'51" E	258.14'
MON 7	S 83°09'46" E	345.38'

TIES FROM MON 2		
TO	BEARING	DISTANCE
MON 1	N 89°27'08" W	766.19'
MON 8	S 84°04'44" W	337.06'
MON 9	S 81°46'30" W	249.82'
MON 10	S 76°59'53" W	163.36'
MON 11	S 62°02'14" W	80.50'
MON 12	S 23°29'33" E	42.34'

LEGEND

- SET 3/4" IRON PIPE 24" LONG TAGGED LS 6953
- FOUND MONUMENT AS NOTED



TRACT NO. 1136
ALMOND BLOSSOM ESTATES NO. 2
BOOK OF MAPS VOL 21, PG 58, SJCR