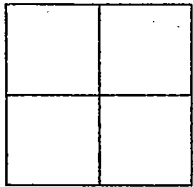


CORNER RECORD

Document Number 01-56
County of San Joaquin, California

City of _____

Brief Legal Description ON TRACY BOULEVARD 1320± NORTH OF LARCH ROAD



CORNER TYPE

Government Corner Control
Meander Property
Rancho Other
Date of Survey NOVEMBER 27, 2000

COORDINATES (Optional)

N. _____
E. _____
Zone _____ NAD27 NAD83
NAD83 Epoch _____
Elev. _____
Vert. Datum: NGVD29 NAVD88
Meas. Units: Metric Imperial

Corner - Left as found Found and tagged Established Reestablished Rebuilt

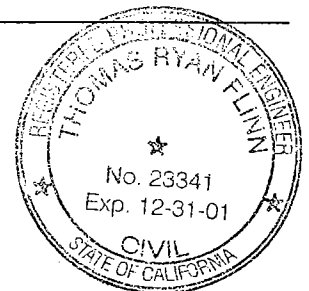
Identification and type of corner found: Evidence used to identify or procedure used to establish or reestablish the corner
SEE SKETCH ON BACKSIDE

A description of the physical condition of the monument as found and as set or reset:
FOUND MONUMENT IN GOOD CONDITION. SEE SKETCH ON BACKSIDE

SURVEYOR'S STATEMENT

This Corner Record was prepared by me or under my direction in conformance with the Land Surveyors Act on Feb 15, 2001.

Signed [Signature] L.S. or R.C.E. Number 23341



COUNTY SURVEYOR'S STATEMENT

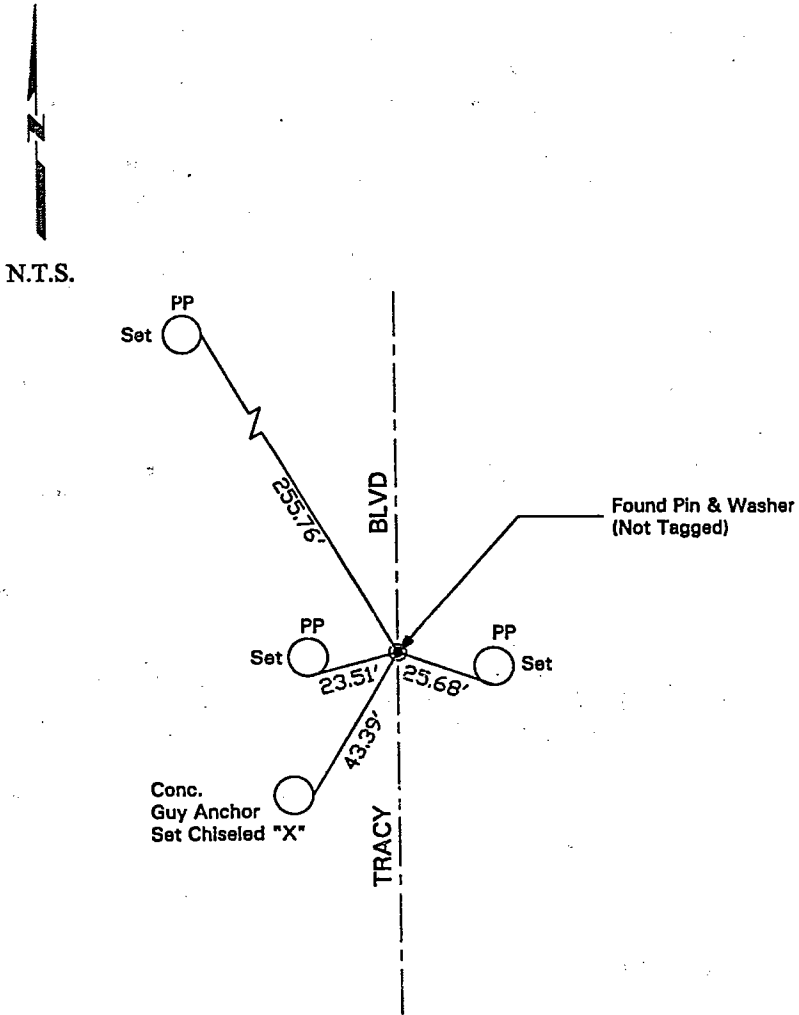
This Corner Record was received FEB. 16, 2001 and examined and filed _____, 2001.

Signed [Signature] R.C.E. No. 28054
Title County Surveyor



County Surveyors Comment _____

(D.D. Sheet No. 53 B)



"No Attempt Was Made To Verify Monument(s)"

FP=Fence Post

GP=Guy Post

JP=Joint Pole

PP=Power Pole

SP=Service Pole

TP=Telephone Pole

N.T.S.=Not To Scale

Set=Conc. Nails with Brass Washers Stamped "S.J. Co.", unless otherwise noted