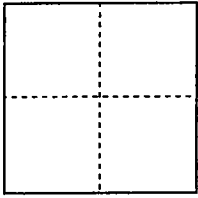


CORNER RECORD

City of Stockton

Document Number 01-53
County of San Joaquin, California

Brief Legal Description Fontana Ave., south of Country Club Blvd.



CORNER TYPE

Government Corner Control
Meander Property
Rancho Other
Date of Survey 1-18-2001

COORDINATES (Optional)

N. _____
E. _____
Zone _____ NAD27 NAD83
NAD83 Epoch _____
Elev. _____
Vert. Datum: NGVD29 NAVD88
Meas. Units: Metric Imperial

Corner - Left as found Found and tagged Established Reestablished Rebuilt

Identification and type of corner found: Evidence used to identify or procedure used to establish or reestablish the corner:

Monuments reset after road reconstruction.
Refer to corner record document No. 01-31

A description of the physical condition of the monument as found and as set or reset:



SURVEYOR'S STATEMENT

This Corner Record was prepared by me or under my direction in conformance with the Land Surveyors' Act on 1-24, 2001.

Signed Stephen Thumbert L.S. or R.C.E. Number 4334

COUNTY SURVEYOR'S STATEMENT

This Corner Record was received JAN. 25, 2001 and examined and filed Feb. 7, 2001.

Signed Manuel Lopez R.C.E. No. 28054
Title County Surveyor



County Surveyors Comment _____

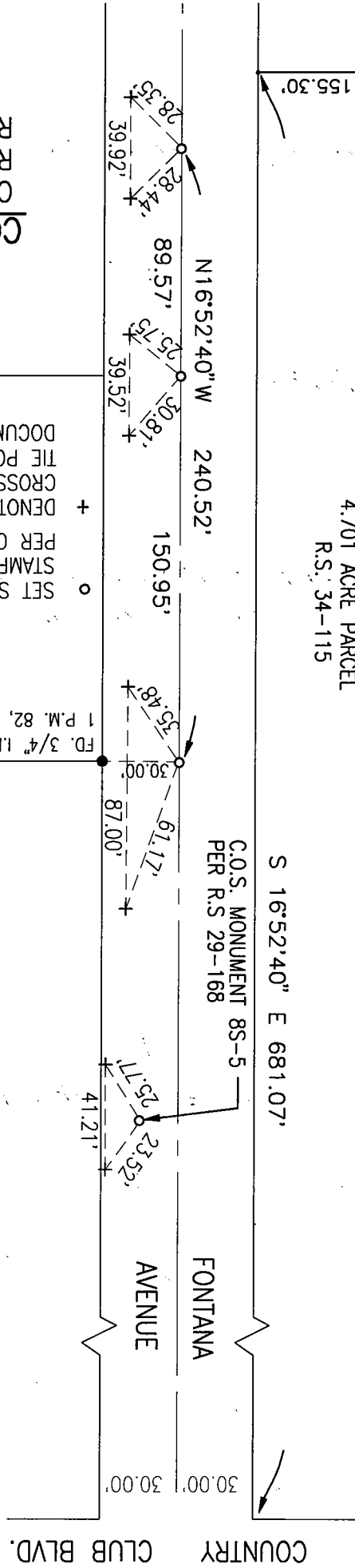
(D.D. Sheet No. 30A)

CORNER RECORD OF 4 MONUMENTS RESET AFTER ROAD RECONSTRUCTION

○ SET STEEL NAIL WITH 1.3" DIA. WASHER
PER CORNER RECORD DOCUMENT NO. 01-31.
STAMPED "SURVEY MARK" & "LS 4334"
+ DENOTES FOUND CHISELED CROSS
GROSS ON TOP OF CURB AS
TIE POINT PER CORNER RECORD
DOCUMENT NO. 01-31.

LEGEND

FD. 3/4" I.PIN NO TAG PER
1 P.M. 82, R.S. 34-115



4.701 ACRE PARCEL
R.S. 34-115

S.O.S. MONUMENT 8S-5
PER R.S. 29-168

SCALE: 1" = 60'



COUNTRY CLUB BLVD.

FONTANA AVENUE