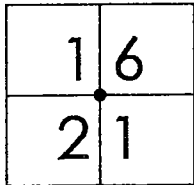


CORNER RECORD

Document Number 01-45
County of San Joaquin, California

City of _____

Brief Legal Description SW CORNER OF SE QUARTER OF SECTION 16, T.4N.,R.7E.



T.4N.,R.7E

CORNER TYPE

- Government Corner Control
 Meander Property
 Rancho Other

Date of Survey NOVEMBER 21, 2000

COORDINATES (Optional)

N. _____
 E. _____
 Zone _____ NAD27 NAD83
 NAD83 Epoch _____
 Elev. _____
 Vert. Datum: NGVD29 NAVD88
 Meas. Units: Metric Imperial

Corner - Left as found Found and tagged Established Reestablished Rebuilt

Identification and type of corner found: Evidence used to identify or procedure used to establish or reestablish the corner
SEE SKETCH ON BACKSIDE

A description of the physical condition of the monument as found and as set or reset:
FOUND MONUMENT IN GOOD CONDITION. SEE SKETCH ON BACKSIDE

SURVEYOR'S STATEMENT

This Corner Record was prepared by me or under my direction in conformance with the Land Surveyors' Act on Jan 24, 2001.

Signed [Signature] - L.S. or R.C.E. Number 23341



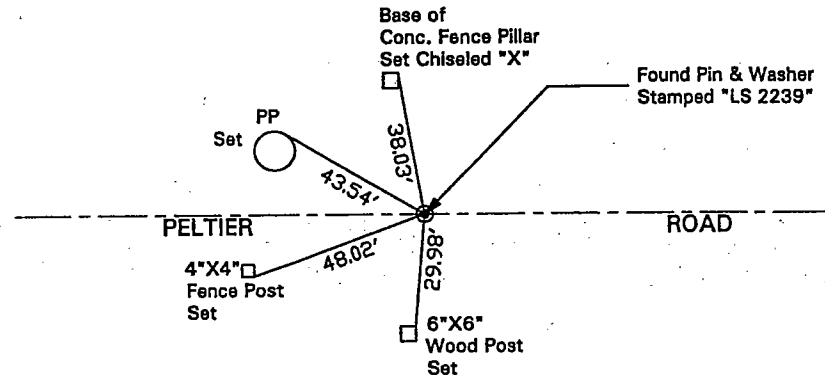
COUNTY SURVEYOR'S STATEMENT

This Corner Record was received JAN. 25, 2001 and examined and filed JAN. 29, 2001.

Signed [Signature] R.C.E. No. 28054
Title County Surveyor

County Surveyors Comment _____

(D.D. Sheet No. 11)



"No Attempt Was Made To Verify Monument(s)"

- FP=Fence Post
- GP=Guy Post
- JP=Joint Pole
- PP=Power Pole
- SP=Service Pole
- TP=Telephone Pole
- N.T.S.=Not To Scale
- Set=Conc. Nails with Brass Washers Stamped "S.J. Co.", unless otherwise noted