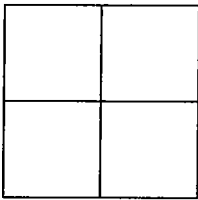


CORNER RECORD

Document Number 01-32

City of ESCALON County of SAN JOAQUIN, California

Brief Legal Description MONUMENTS ON NORTH LINE OF TRACT NO. 1136, ALMOND BLOSSOM ESTATES, UNIT NO. 2, FILED IN BOOK 21 OF MAPS AND PLATS, PAGE 58, SAN JOAQUIN COUNTY RECORDS.



CORNER TYPE

Government Corner  Control   
Meander  Property   
Rancho  Other   
Date of Survey 12-21-2000

COORDINATES (Optional)

N. \_\_\_\_\_  
E. \_\_\_\_\_  
Zone \_\_\_\_\_ NAD27  NAD83   
NAD83 Epoch \_\_\_\_\_  
Elev. \_\_\_\_\_  
Vert. Datum: NGVD29  NAVD88   
Meas. Units: Metric  Imperial

Corner - Left as found  Found and tagged  Established  Reestablished  Rebuilt

Identification and type of corner found: Evidence used to identify or procedure used to establish or reestablished the corner:  
FOUND PROPERTY CORNER MONUMENTS ALONG NORTH LINE OF ALMOND BLOSSOM ESTATES, UNIT NO. 2, FILED IN BOOK 21 OF MAPS AND PLATS AT PAGE 58, SAN JOAQUIN COUNTY RECORDS.

A description of the physical condition of the monument as found and as set or reset: \_\_\_\_\_  
TIED IN FOUND MONUMENTS FROM TWO CONTROL POINTS WHICH WILL BE USED TO REPLACE DESTROYED MONUMENTS AFTER COMPLETION OF PIPELINE CONSTRUCTION

SURVEYOR'S STATEMENT

This Corner Record was prepared by me or under my direction in conformance with the Land Surveyors' Act on JANUARY 4, 2001.

Signed [Signature] L.S. Number 6953



COUNTY SURVEYOR'S STATEMENT

This Corner Record was received JANUARY 22, 2001 and examined and filed JANUARY 25, 2001.

Signed [Signature] R.C.E. No. 28054  
Title County Surveyor



County Surveyor's Comment \_\_\_\_\_



SCALE: 1"=100'

MONUMENTS (MON) FOUND & SET

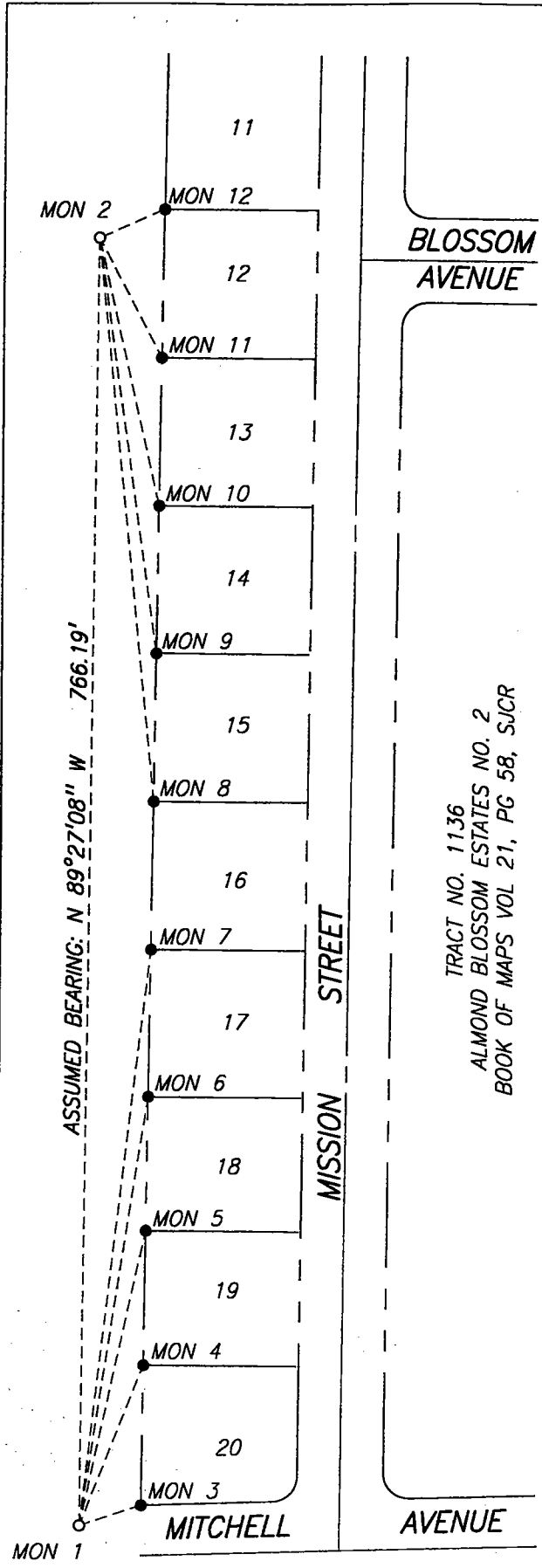
MONUMENT DESCRIPTION	
MON 1	SET 1/2" IRON PIPE, CONTROL POINT
MON 2	SET 1/2" IRON PIPE, CONTROL POINT
MON 3	FD 1/2" PIN NO TAG
MON 4	FD 3/4" IRON PIPE RCE 6152
MON 5	FD 3/4" IRON PIPE RCE 6152
MON 6	FD 3/4" IRON PIPE BENT RCE 6152
MON 7	FD 3/4" IRON PIPE IN CONC RCE 6152
MON 8	FD 3/4" IRON PIPE RCE 6152
MON 9	FD 3/4" IRON PIPE RCE 6152
MON 10	FD 3/4" IRON PIPE RCE 6152
MON 11	FD 3/4" IRON PIPE RCE 6152
MON 12	FD 3/4" IRON PIPE RCE 6152

TIES FROM CONTROL POINTS

TIES FROM MON 1		
TO	BEARING	DISTANCE
MON 2	S 89°27'08" E	766.19'
MON 3	S 17°46'11" E	38.94'
MON 4	S 68°06'56" E	102.37'
MON 5	S 77°23'50" E	179.24'
MON 6	S 81°04'51" E	258.14'
MON 7	S 83°09'46" E	345.38'

TIES FROM MON 2		
TO	BEARING	DISTANCE
MON 1	N 89°27'08" W	766.19'
MON 8	S 84°04'44" W	337.06'
MON 9	S 81°46'30" W	249.82'
MON 10	S 76°59'53" W	163.36'
MON 11	S 62°02'14" W	80.50'
MON 12	S 23°29'33" E	42.34'



TRACT NO. 1136  
 ALMOND BLOSSOM ESTATES NO. 2  
 BOOK OF MAPS VOL 21, PG 58, SJCR