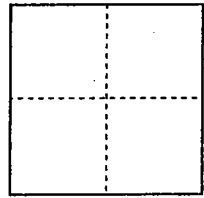


CORNER RECORD

City of Stockton

Document Number 01-31
County of San Joaquin, California

Brief Legal Description Fontana Avenue, south of Country Club Blvd.



CORNER TYPE

Government Corner Control
Meander Property
Rancho Other
Date of Survey 11-8-00

COORDINATES (Optional)

N. _____
E. _____
Zone _____ NAD27 NAD83
NAD83 Epoch _____
Elev. _____
Vert. Datum: NGVD29 NAVD88
Meas. Units: Metric Imperial

Corner - Left as found Found and tagged Established Reestablished Rebuilt

Identification and type of corner found: Evidence used to identify or procedure used to establish or reestablish the corner:

Note: Fontana Ave. is scheduled for reconstruction. The 4 monuments tied out on back will be destroyed.

A description of the physical condition of the monument as found and as set or reset:



SURVEYOR'S STATEMENT

This Corner Record was prepared by me or under my direction in conformance with the Land Surveyors' Act on December 7, 2000.

Signed Stephen Thumler L.S. or R.C.E. Number 4334

COUNTY SURVEYOR'S STATEMENT

This Corner Record was received JANUARY 9, 2001 and examined and filed Jan 18, 2001.

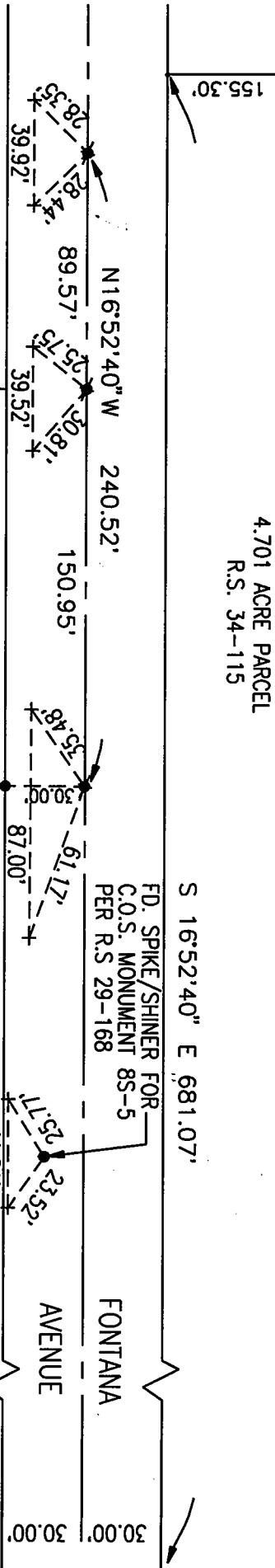
Signed Manuel Lopez R.C.E. No. 28054
Title County Surveyor



County Surveyor's Comment _____

(D.D. Sheet No. 30A)

COUNTRY CLUB BLVD.



4.701 ACRE PARCEL
R.S. 34-115

SCALE: 1"=60'



CORNER RECORD
OF 4 MONUMENTS
TO BE DESTROYED BY
ROAD RECONSTRUCTION

+ DENOTES CHISELED CROSS SET
ON TOP OF CURB AS SWING
THE POINT

● FD. CONG. NAIL PER P.M. 14-114
AND R.S. 34-115

LEGEND

● FD. 3/4" I/PIN NO TAG PER
1 P.M. 82, R.S. 34-115

S 16°52'40" E 681.07'
FD. SPIKE/SHINER FOR
C.O.S. MONUMENT 85-5
PER R.S. 29-168

FONTANA
AVENUE

30.00'

41.21'

23.52'

17.52'

87.00'

30.00'

94.52'

150.95'

240.52'

N16°52'40" W

30.81'

39.52'

89.57'

39.92'

28.44'

28.31'

S73°07'20" W 155.30'