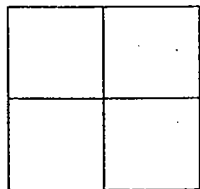


# CORNER RECORD

Document Number 01-3  
County of San Joaquin, California

City of \_\_\_\_\_

Brief Legal Description INTERSECTION OF DEVRIES ROAD AND TREDWAY ROAD



### CORNER TYPE

Government Corner  Control   
Meander  Property   
Rancho  Other   
Date of Survey NOVEMBER 30, 2000

### COORDINATES (Optional)

N. \_\_\_\_\_  
E. \_\_\_\_\_  
Zone \_\_\_\_\_ NAD27  NAD83   
NAD83 Epoch \_\_\_\_\_  
Elev. \_\_\_\_\_  
Vert. Datum: NGVD29  NAVD88   
Meas. Units: Metric  Imperial

Corner - Left as found  Found and tagged  Established  Reestablished  Rebuilt

Identification and type of corner found: Evidence used to identify or procedure used to establish or reestablish the corner  
FOUND PK NAIL. CONFIRMED LOCATION PER SWINGS ON CR-00-056. SEE SKETCH ON BACKSIDE.

A description of the physical condition of the monument as found and as set or reset:  
FOUND MONUMENT IN GOOD CONDITION. PLACED MONUMENT WELL OVER MONUMENT. SEE SKETCH ON BACKSIDE

### SURVEYOR'S STATEMENT

This Corner Record was prepared by me or under my direction in conformance with the Land Surveyors' Act on 1-5-, 2001.

Signed \_\_\_\_\_ L.S. or R.C.E. Number 23341

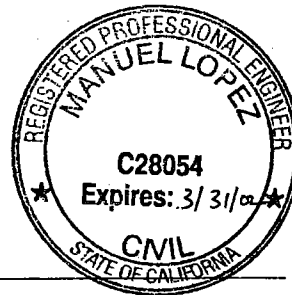
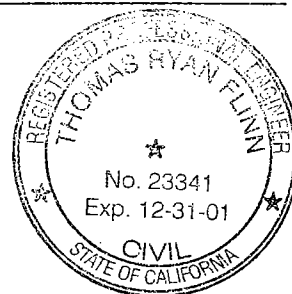
### COUNTY SURVEYOR'S STATEMENT

This Corner Record was received 1-8-, 2001 and examined and filed Jan 9, 2001.

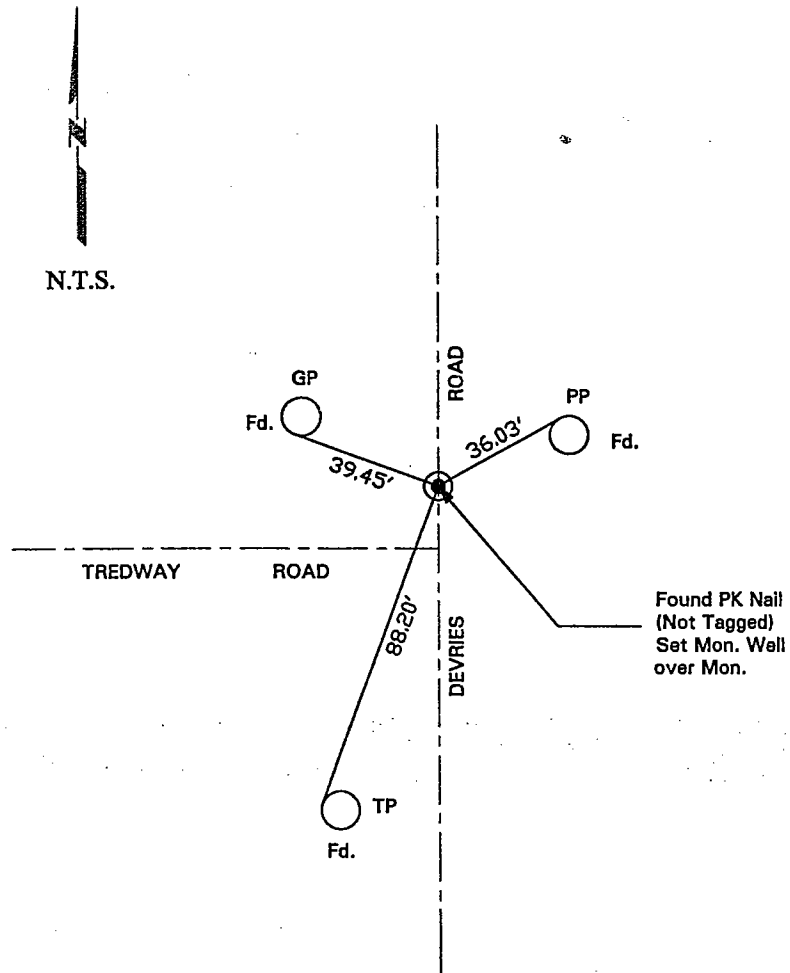
Signed Manuel Lopez R.C.E. No. 28054

Title \_\_\_\_\_ County Surveyor

County Surveyors Comment \_\_\_\_\_



(D.D. Sheet No. 14)



"No Attempt Was Made To Verify Monument(s)"

FP=Fence Post

GP=Guy Post

JP=Joint Pole

PP=Power Pole

SP=Service Pole

TP=Telephone Pole

N.T.S.=Not To Scale

Fd.=Conc. Nails with Brass Washers Stamped "S.J. Co.", unless otherwise noted