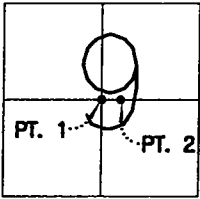


CORNER RECORD

Document Number 01-29

City of MANTECA County of SAN JOAQUIN, California

Brief Legal Description BOOK 35 OF MAPS AND PLATS, PAGE 4, SAN JOAQUIN COUNTY RECORDS.
CERTIFICATE OF CORRECTION, INSTRUMENT NO. 00110147, SAN JOAQUIN COUNTY RECORDS.



T.2 S., R. 7 E.,
M.D.B.&M.

CORNER TYPE

Government Corner Control
Meander Property
Rancho Other
Date of Survey 12-19-00

COORDINATES (Optional)

N. _____
E. _____
Zone _____ NAD27 NAD83
NAD83 Epoch _____
Elev. _____
Vert. Datum: NGVD29 NAVD88
Meas. Units: Metric Imperial

Corner - Left as found Found and tagged Established Reestablished Rebuilt

Identification and type of corner found: Evidence used to identify or procedure used to establish or reestablished the corner:
POINT 1: FOUND BRASS DISK STAMPED R.E. 9338 IN MONUMENT BOX MARKING THE CENTER OF SECTION
9 AT THE CENTERLINE OF WOODWARD AVENUE AS SHOWN FOR RECORD IN BOOK 35 OF MAPS AND
PLATS AT PAGE 4, SAN JOAQUIN COUNTY RECORDS.

POINT 2: FOUND NAIL AT THE INTERSECTION OF SPRECKELS ROAD AND WOODWARD AVENUE AS SHOWN
FOR RECORD IN BOOK 35 OF MAPS AND PLATS AT PAGE 4, SAN JOAQUIN COUNTY RECORDS.

A description of the physical condition of the monument as found and as set or reset: _____
THE MONUMENTS WILL BE DESTROYED DUE TO THE ROADWAY CONSTRUCTION ON WOODWARD AVENUE AND
SPRECKELS ROAD.

SURVEYOR'S STATEMENT

This Corner Record was prepared by me or under my direction in conformance with the Land Surveyors' Act on DECEMBER 28, 2000.

Signed [Signature] L.S. Number 6953



COUNTY SURVEYOR'S STATEMENT

This Corner Record was received JANUARY 16, 2001 and examined and filed Jan 18, 2001.

Signed [Signature] R.C.E. No. 28054

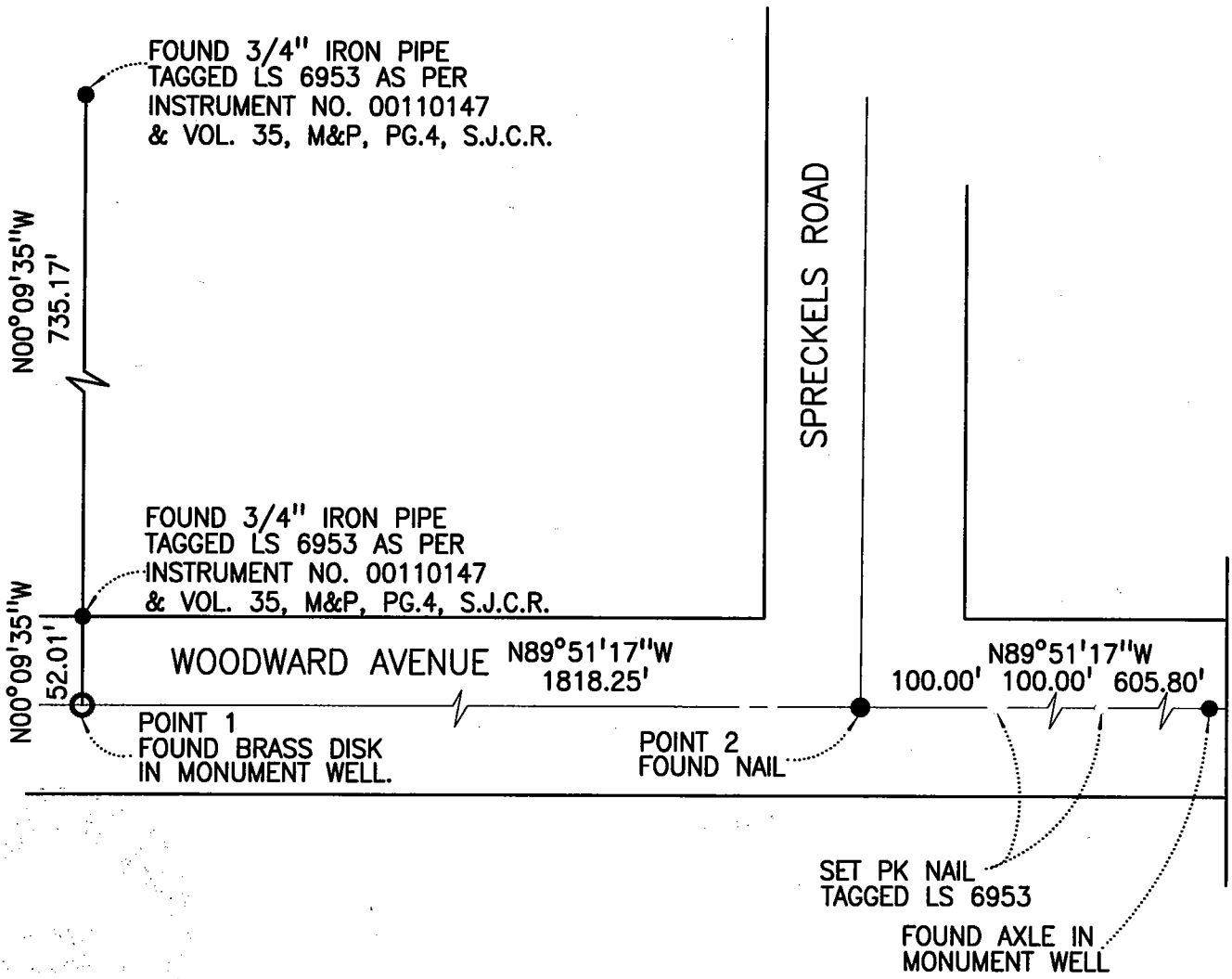
Title County Surveyor



County Surveyor's Comment _____



NOT TO SCALE



NOTE: FOUND MONUMENTS ARE NOT VERIFIED AS BEING THE CENTERLINE OF THE STREET RIGHTS-OF-WAYS.