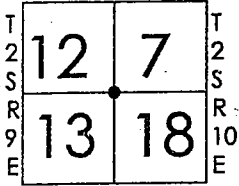


# CORNER RECORD

Document Number 01-24  
 County of San Joaquin, California

City of \_\_\_\_\_

Brief Legal Description SE CORNER OF SECTION 12, T.2S., R.9E.



### CORNER TYPE

Government Corner  Control   
 Meander  Property   
 Rancho  Other   
 Date of Survey OCTOBER 2000

### COORDINATES (Optional)

N. \_\_\_\_\_  
 E. \_\_\_\_\_  
 Zone NAD27  NAD83   
 NAD83 Epoch \_\_\_\_\_  
 Elev. \_\_\_\_\_  
 Vert. Datum: NGVD29  NAVD88   
 Meas. Units: Metric  Imperial

Corner - Left as found  Found and tagged  Established  Reestablished  Rebuilt

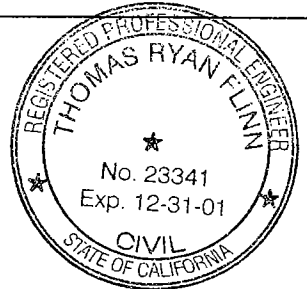
Identification and type of corner found: Evidence used to identify or procedure used to establish or reestablish the corner  
SEE SKETCH ON BACKSIDE.

A description of the physical condition of the monument as found and as set or reset:  
FOUND MONUMENT IN GOOD CONDITION. SEE SKETCH ON BACKSIDE

### SURVEYOR'S STATEMENT

This Corner Record was prepared by me or under my direction in conformance with the Land Surveyors' Act on Jan 9, 2001.

Signed \_\_\_\_\_ L.S. or R.C.E. Number 23341



### COUNTY SURVEYOR'S STATEMENT

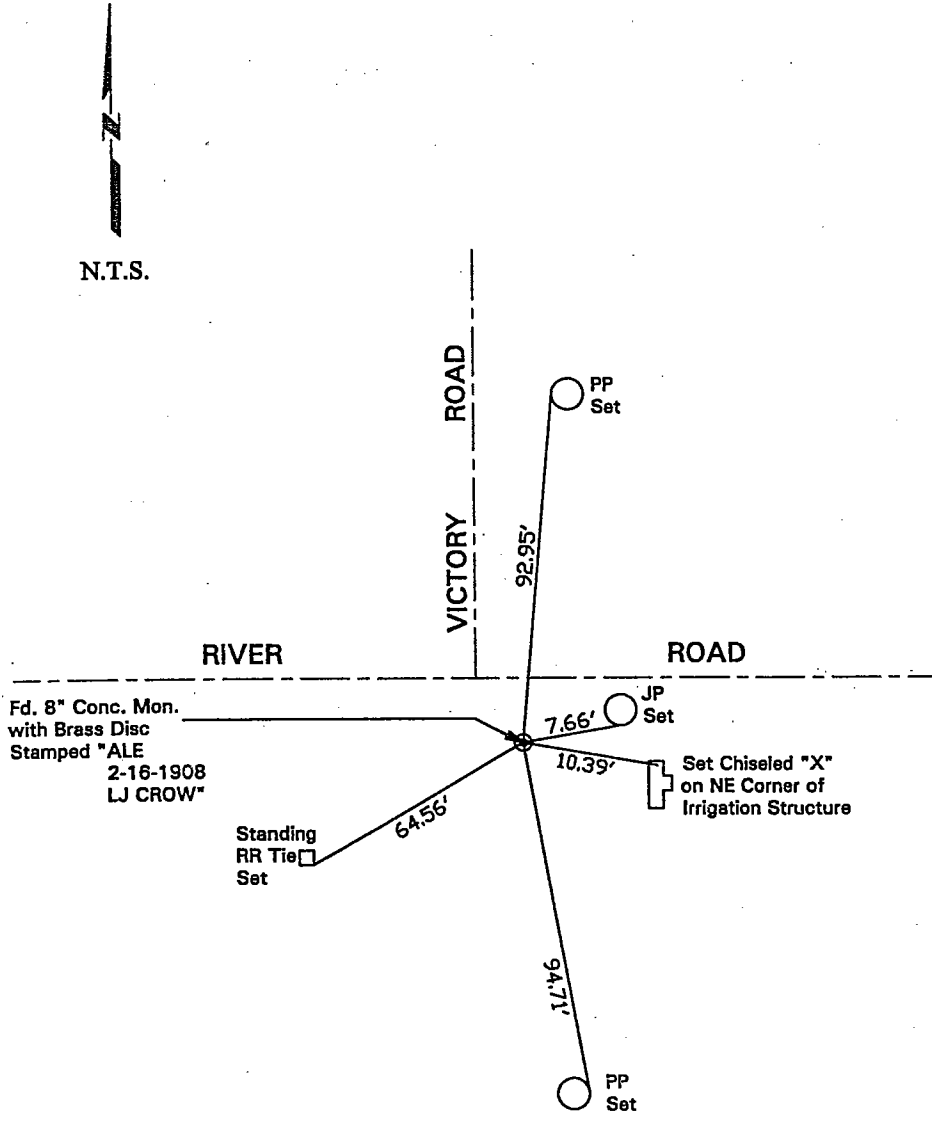
This Corner Record was received 1-9, 2001 and examined and filed Jan 13, 2001.

Signed Manuel Lopez R.C.E. No. 28054  
 Title County Surveyor



County Surveyors Comment \_\_\_\_\_

(D.D. Sheet No. 63)



"No Attempt Was Made To Verify Monument(s)"

- FP=Fence Post
- GP=Guy Post
- JP=Joint Pole
- PP=Power Pole
- SP=Service Pole
- TP=Telephone Pole
- N.T.S.=Not To Scale
- Set=Conc. Nails with Brass Washers Stamped "S.J. Co.", unless otherwise noted