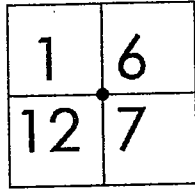


CORNER RECORD

Document Number 01-1
County of San Joaquin, California

City of _____

Brief Legal Description SE CORNER OF SECTION 1, T.3N.,R.5E.



T.3N.,R.5E T.3N.,R.6E

CORNER TYPE

Government Corner Control
 Meander Property
 Rancho Other
 Date of Survey NOVEMBER 30, 2000

COORDINATES (Optional)

N. _____
 E. _____
 Zone _____ NAD27 NAD83
 NAD83 Epoch _____
 Elev. _____
 Vert. Datum: NGVD29 NAVD88
 Meas. Units: Metric Imperial

Corner - Left as found Found and tagged Established Reestablished Rebuilt

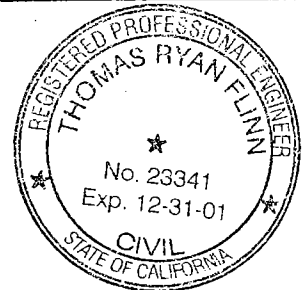
Identification and type of corner found: Evidence used to identify or procedure used to establish or reestablish the corner
FOUND BOLT/WASHER, STAMPED "LS-2239". CONFIRMED LOCATION PER SWINGS ON CR-00-218. SEE SKETCH ON BACKSIDE

A description of the physical condition of the monument as found and as set or reset:
FOUND MONUMENT IN GOOD CONDITION. SEE SKETCH ON BACKSIDE

SURVEYOR'S STATEMENT

This Corner Record was prepared by me or under my direction in conformance with the Land Surveyors' Act on 1-2, 2001.

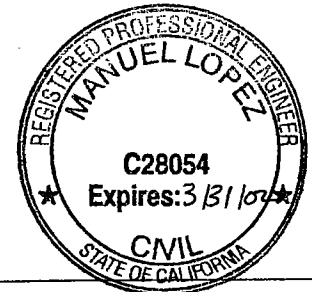
Signed _____ L.S. or R.C.E. Number 23341



COUNTY SURVEYOR'S STATEMENT

This Corner Record was received JANUARY 5, 2001 and examined and filed 1/7, 2001.

Signed Manuel Lopez R.C.E. No. 28054
 Title _____ County Surveyor

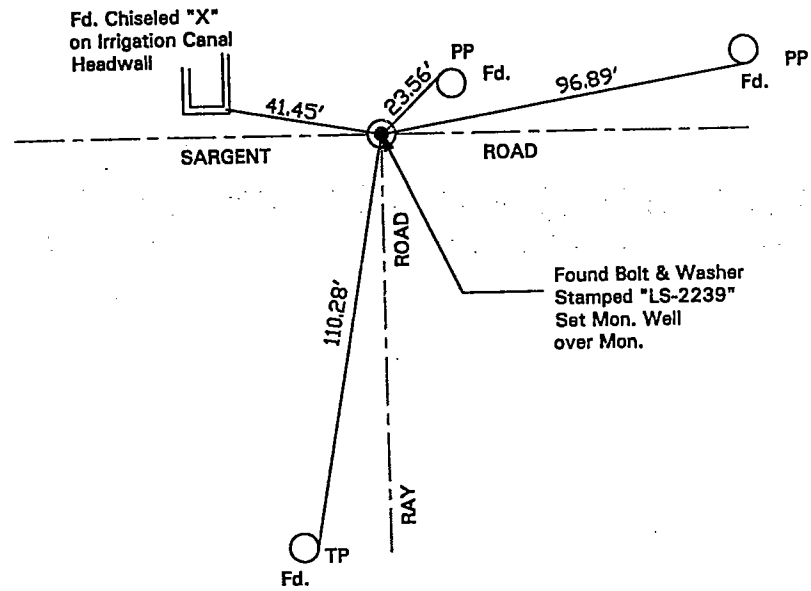


County Surveyors Comment _____

(D.D. Sheet No. 86 & 14)



N.T.S.



"No Attempt Was Made To Verify Monument(s)"

FP=Fence Post

GP=Guy Post

JP=Joint Pole

PP=Power Pole

SP=Service Pole

TP=Telephone Pole

N.T.S.=Not To Scale

Fd.=Conc. Nails with Brass Washers Stamped "S.J. Co. Pub. Works", unless otherwise noted