

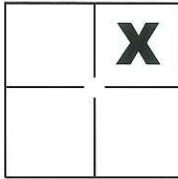
# CORNER RECORD

Document Number CR-14-192

City of \_\_\_\_\_

County of San Joaquin, California

Brief Legal Description 40-Foot Strip as shown on R.S. 6-112, S.J.C.R.



### CORNER TYPE

Government Corner  Control   
 Meander  Property   
 Rancho  Other

### COORDINATES(Optional)

N. \_\_\_\_\_  
 E. \_\_\_\_\_  
 Zone \_\_\_\_\_ NAD27  NAD83   
 NAD83 Epoch \_\_\_\_\_  
 Elev. \_\_\_\_\_  
 Vert. Datum: NGVD29  NADV88   
 Meas. Units: Metric  Imperial

Sec. 33, T.1N., R.7E.,  
 M.D.B. & M.

Date of Survey July 28, 2014

Corner - Left as found  Found and tagged  Established  Reestablished  Rebuilt

Identification and type of corner found: Evidence used to identify or procedure used to establish or reestablish the corner:

See sheet 2

A description of the physical condition of the monument as found and as set or reset: Note 1: Fd. 1-1/4" Iron Pipe w/tag stamped RE 1014 per (A), slightly leaning Easterly, set washer on top stamped LS 4450; Note 2: Fd. 1-1/4" Iron Pipe w/tag stamped RE 1014 per (A), set washer on top stamped LS 4450; Note 3: Fd. 1-1/4" Iron Pipe w/tag stamped RE 1014 per (A), leaning easterly, replaced with 3/4" Iron Pipe w/plastic cap stamped LS 4450 in its position; Note 5: Fd. 1-1/4" Iron Pipe w/tag stamped RE 1014 per (A), leaning, replaced with 3/4" Iron Pipe w/plastic cap stamped LS 4450 in its position, N53°39'59"E 0.36'(M) from prop. cor.

### SURVEYOR'S STATEMENT

This Corner Record was prepared by me or under my direction in conformance with the Land Surveyor's Act on July 31, 2014.

Signed Michael L. Quarteroni P.L.S. or R.C.E. No.: \_\_\_\_\_ L.S. 4450



### COUNTY SURVEYOR'S STATEMENT

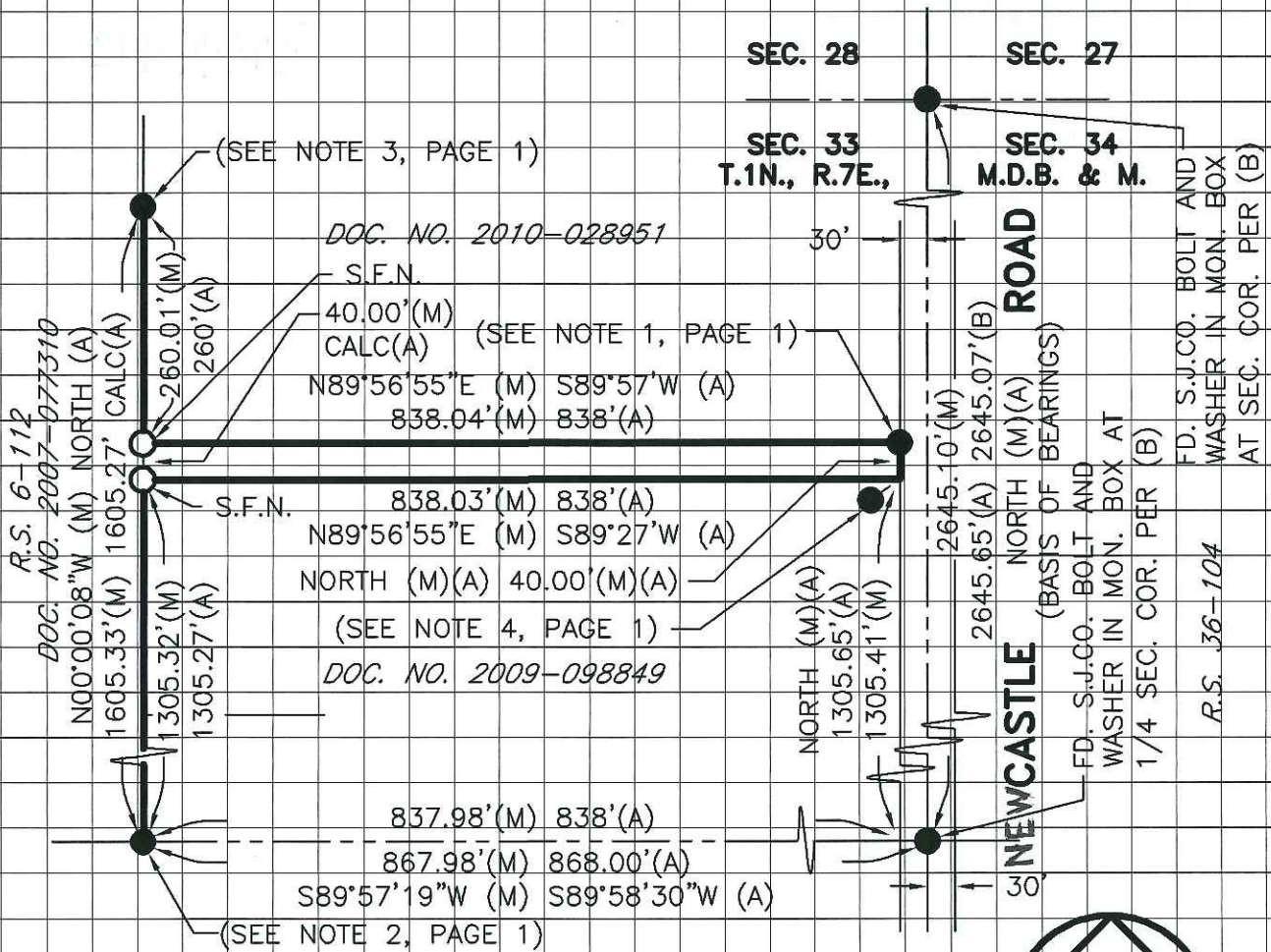
This Corner Record was received August 6, 2014 and examined and filed August 25, 2014.

Signed Thomas M. Gau P.L.S. or R.C.E. No.: 26994

Title County Surveyor

County Surveyor's Comment \_\_\_\_\_





**REFERENCES**

- (A) R.S. 6-112, S.J.C.R.
- (B) R.S. 36-104, S.J.C.R.

**BASIS OF BEARINGS**

THE BASIS OF BEARINGS FOR THIS SURVEY IS THE EAST LINE OF SECTION 33, T.1N., R.7E., M.D.B. & M., SHOWN ON R.S. 6-112 S.J.C.R., AS NORTH.

**LEGEND**

- INDICATES FOUND MONUMENT AS NOTED
- INDICATES SET 3/4" X 30" IRON PIPE W/PLASTIC CAP STAMPED L.S. 4450
- FD. INDICATES FOUND ON THIS SURVEY
- (M) INDICATES MEASURED THIS SURVEY
- DOC. NO. INDICATES DOCUMENT NUMBER, S.J.C.R.
- R.S. INDICATES RECORD OF SURVEY, BOOK AND PAGE, S.J.C.R.
- S.J.C.R. INDICATES SAN JOAQUIN COUNTY RECORDS
- (CALC) INDICATES CALCULATED FROM RECORD INFORMATION
- S.F.N. INDICATES SEARCHED FOUND NOTHING