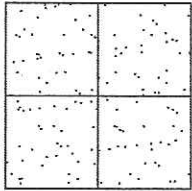


CORNER RECORD

Document Number CR-14-171
County of San Joaquin, California

City of _____

Brief Legal Description THORNTON ROAD 782' ± NORTH OF PELTIER ROAD
(WITHIN SECTION 14, TOWNSHIP 4 NORTH, RANGE 5 EAST, MOUNT DIABLO BASE & MERIDIAN)



CORNER TYPE

Government Corner Control
Meander Property
Rancho Other

Date of Survey July 11, 2014

COORDINATES (Optional)

N. _____
E. _____
Zone _____ NAD27 NAD83
NAD83 Epoch _____
Elev. _____
Vert. Datum: NGVD29 NAVD88
Meas. Units: Metric Imperial

Corner - Left as found Found and tagged Established Reestablished Rebuilt

Identification and type of corner found: Evidence used to identify or procedure used to establish or reestablish the corner:
SEE SKETCH ON BACKSIDE.

A description of the physical condition of the monument as found and as set or reset:
SEE SKETCH ON BACKSIDE.

SURVEYOR'S STATEMENT

This Corner Record was prepared by me or under my direction in conformance with the Land Surveyors' Act on July 14, 2014.

Signed James E. Hart P.L.S. Number 8657

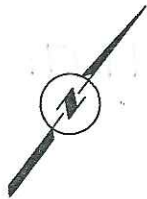
COUNTY SURVEYOR'S STATEMENT

This Corner Record was received July 18, 2014 and examined and filed August 25, 2014.

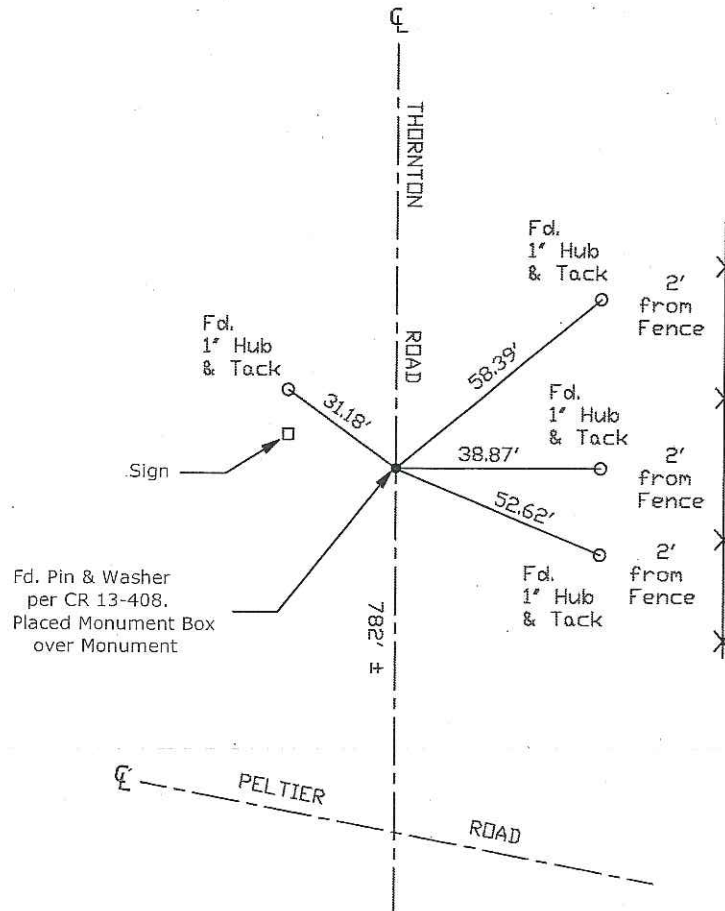
Signed Thomas M. Gau R.C.E. No. 26994
Title County Surveyor

County Surveyor's Comment _____





N.T.S.



Note: Found Monuments are not tagged unless otherwise noted.

"No Attempt Was Made to Verify the Monument(s)"

Set=Conc. Nail with Brass Washer Stamped

"S.J. Co.", unless otherwise noted

Fd.=Found Conc. Nail with Brass Washer Stamped

"S.J. Co.", unless otherwise noted

CR=Corner Record

FP=Fence Post

JP=Joint Pole

LP=Light Pole

PP=Power Pole

GP=Guy Pole

SP=Service Pole

TP=Telephone Pole

S.F.N.=Searched Found Nothing

N.T.S.=Not To Scale

M&P=Maps & Plats

PM=Parcel Map

RS=Record of Survey

FB=Field Book