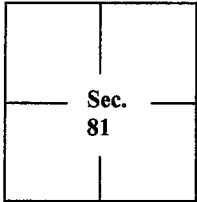


CORNER RECORD

Document Number CR-14-86
City of _____ County of San Joaquin, California

Brief Legal Description North line of Parcel 2, Document No. 2012-144105, San Joaquin County Records.



Weber Grant

CORNER TYPE

- Government Corner Control
- Meander Property
- Rancho Other

Date of Survey 4/3/2014

COORDINATES (Optional)

- N. _____
- E. _____
- Zone _____ NAD27 NAD83
- NAD83 Epoch _____
- Elev. _____
- Vert. Datum: NGVD29 NAVD88
- Meas. Units: Metric Imperial

Corner - Left as found Found and tagged Established Reestablished Rebuilt

Identification and type of corner found: Evidence used to identify or procedure used to establish or reestablish the corner:

See sketch on backside

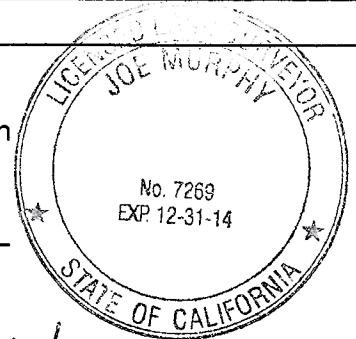
A description of the physical condition of the monument as found and as set or reset: See page 2 of 2

See sketch on backside

SURVEYOR'S STATEMENT

This Corner Record was prepared by me or under my direction in conformance with the Land Surveyors' Act on April 3, 2014.

Signed [Signature] P.L.S. or R.C.E. No. 7269

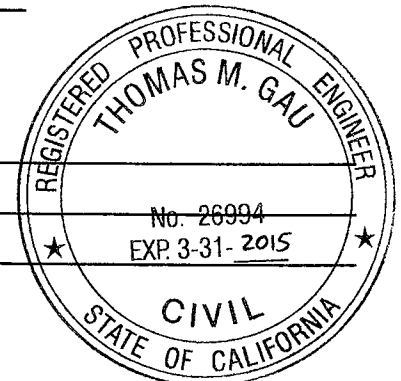


COUNTY SURVEYOR'S STATEMENT

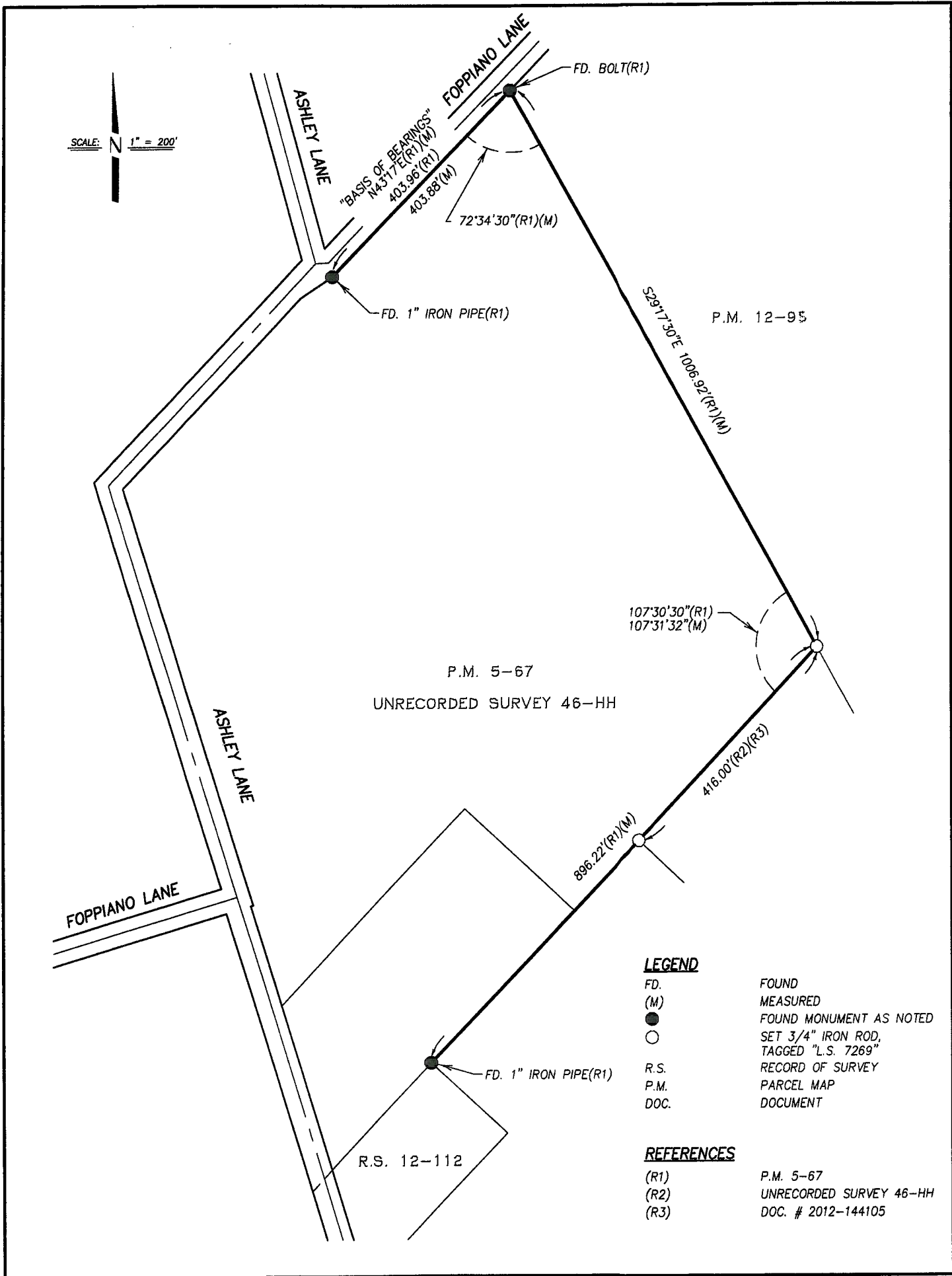
This Corner Record was received May 15, 2014 and examined and filed June 2, 2014.

Signed [Signature] R.C.E. No. 26994

Title County Surveyor



County Surveyor's Comment _____



SCALE: 1" = 200'

LEGEND

- FD. FOUND
- (M) MEASURED
- FOUND MONUMENT AS NOTED
- SET 3/4" IRON ROD, TAGGED "L.S. 7269"
- R.S. RECORD OF SURVEY
- P.M. PARCEL MAP
- DOC. DOCUMENT

REFERENCES

- (R1) P.M. 5-67
- (R2) UNRECORDED SURVEY 46-HH
- (R3) DOC. # 2012-144105