

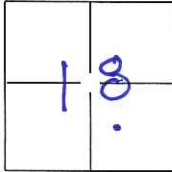
# CORNER RECORD

Document Number CR-14-60

City of \_\_\_\_\_

County of San Joaquin, California

Brief Legal Description Southeast quarter of Section 18 per Book 9 of Parcel Maps, Page 7, S.J.C.R.



T2S, R7E, MDM

### CORNER TYPE

Government Corner  Control   
 Meander  Property   
 Rancho  Other

Date of Survey March 13, 2014

### COORDINATES(Optional)

N. \_\_\_\_\_  
 E. \_\_\_\_\_  
 Zone \_\_\_\_\_ NAD27  NAD83   
 NAD83 Epoch \_\_\_\_\_  
 Elev. \_\_\_\_\_  
 Vert. Datum: NGVD29  NADV88   
 Meas. Units: Metric  Imperial

Corner - Left as found  Found and tagged  Established  Reestablished  Rebuilt

Identification and type of corner found: Evidence used to identify or procedure used to establish or reestablish the corner:

SEE SKETCH ON PAGE 2

A description of the physical condition of the monument as found and as set or reset: \_\_\_\_\_

SEE SKETCH ON PAGE 2

### SURVEYOR'S STATEMENT

This Corner Record was prepared by me or under my direction in conformance with the Land Surveyor's Act on Mar. 24th, 2014.

Signed Douglas F. Banks P.L.S. or R.C.E. No.: 8159



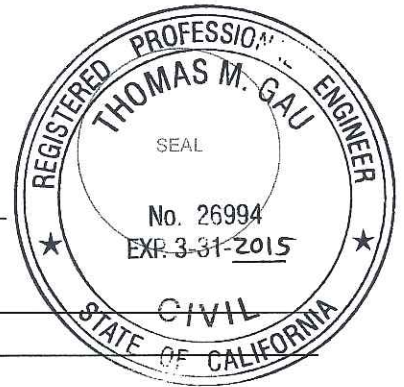
### COUNTY SURVEYOR'S STATEMENT

This Corner Record was received March 28, 2014 and examined and filed April 8, 2014.

Signed Thomas M. Gau P.L.S. or R.C.E. No.: 26994

Title County Surveyor

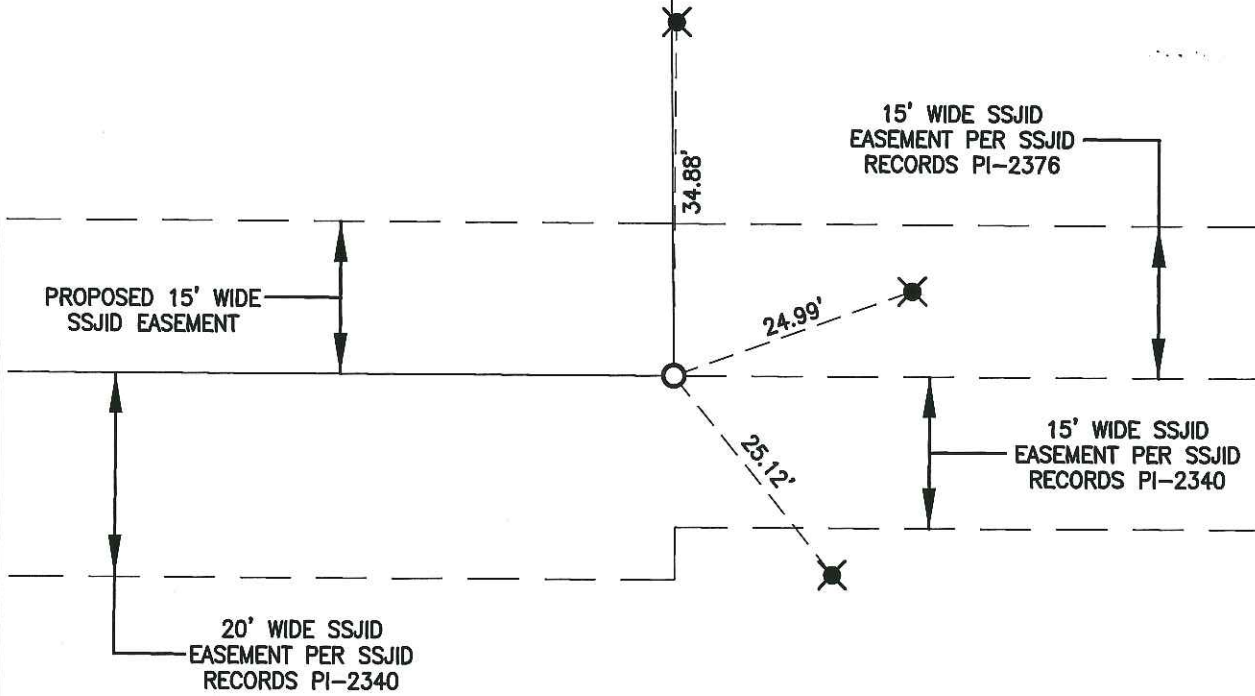
County Surveyor's Comment \_\_\_\_\_





NOT TO SCALE

LOT 38  
7-M&P-12  
CHIN BROTHERS LLC  
I.N. 95117608



PARCEL B  
9-PM-7  
EPPERSON  
4454-OR-546

REFERENCES:

(A) 9-PM-7, S.J.C.R.

LEGEND:

LEGEND:

- FD FOUND
- (M) MEASURED DISTANCE
- ID INSIDE DIAMETER
- PM- PARCEL MAPS, BOOK, PAGE, S.J.C.R.
- M&P- MAPS & PLATS, BOOK, PAGE, S.J.C.R.
- S.J.C.R. SAN JOAQUIN COUNTY RECORDS

- FD PK NAIL W/ TAG STAMPED LS 4222 IN CONCRETE PER (A), DESTROYED DURING CONSTRUCTION OF IRRIGATION PIPELINE, RESET 3/4" ID X 24" LONG IRON PIPE WITH PLASTIC PLUG STAMPED L.S. 8159
- ✕ FOUND 3/4" IRON PIPE WITH PLASTIC PLUG STAMPED "CONTROL" PER CR-14-02