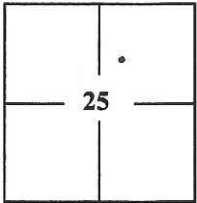


CORNER RECORD

Document Number CR-14-21
County of San Joaquin, California

City of _____

Brief Legal Description A Portion of the Northeast quarter of Section 25 as shown on Parcel Map filed in Book 3 of Maps, Page 62.



CORNER TYPE

- Government Corner Control
- Meander Property
- Rancho Other

Date of Survey 12/6/13

COORDINATES (Optional)

N. _____
 E. _____
 Zone _____ NAD27 NAD83
 NAD83 Epoch _____
 Elev. _____
 Vert. Datum: NGVD29 NAVD88
 Meas. Units: Metric Imperial

Corner - Left as found Found and tagged Established Reestablished Rebuilt

Identification and type of corner found: Evidence used to identify or procedure used to establish or reestablish the corner:
Monuments shown on Parcel Map 3-62 along the section line in the centerline of Acampo road, shown on sketch, page 2.

A description of the physical condition of the monument as found and as set or reset: Set 3/4" x 24" iron rod capped stamped "LS 7269" as shown on sketch, page 2.

SURVEYOR'S STATEMENT

This Corner Record was prepared by me or under my direction in conformance with the Land Surveyors' Act on December 6, 2013.

Signed Joe Murphy L.S. No. 7269



COUNTY SURVEYOR'S STATEMENT

This Corner Record was received January 28, 2014 and examined and filed February 14, 2014

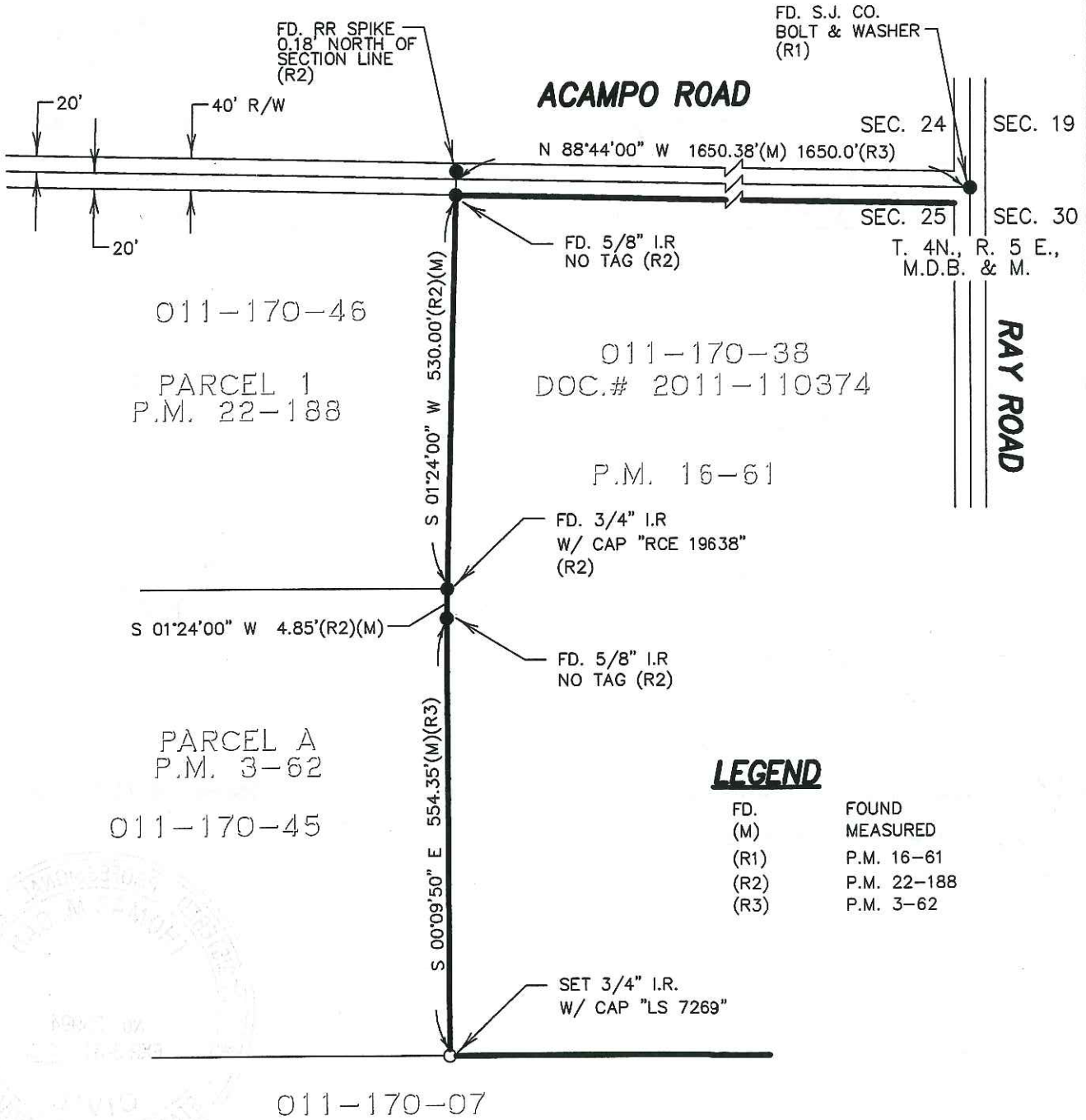
Signed Thomas M. Gau R.C.E. No. 26994

Title County Surveyor



County Surveyor's Comment _____

SCALE:  1" = 200'



LEGEND

FD.	FOUND
(M)	MEASURED
(R1)	P.M. 16-61
(R2)	P.M. 22-188
(R3)	P.M. 3-62

