

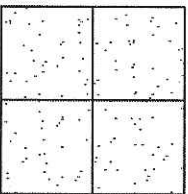
CORNER RECORD

City of _____

Document Number CR-14-04
County of San Joaquin, California

Brief Legal Description LEMON AVENUE 4629' +/- WEST OF SUTLIFF AVENUE

(WITHIN SECTION 11, TOWNSHIP 2 SOUTH, RANGE 9 EAST, MOUNT DIABLO BASE & MERIDIAN)



CORNER TYPE

- Government Corner Control
- Meander Property
- Rancho Other

Date of Survey January 14, 2014

COORDINATES (Optional)

- N. _____
- E. _____
- Zone _____ NAD27 NAD83
- NAD83 Epoch _____
- Elev. _____
- Vert. Datum: NGVD29 NAVD88
- Meas. Units: Metric Imperial

Corner - Left as found Found and tagged Established Reestablished Rebuilt

Identification and type of corner found: Evidence used to identify or procedure used to establish or reestablish the corner:
SEE SKETCH ON BACKSIDE.

A description of the physical condition of the monument as found and as set or reset:
SEE SKETCH ON BACKSIDE.

SURVEYOR'S STATEMENT

This Corner Record was prepared by me or under my direction in conformance with the Land Surveyors' Act on February 3, 2014.

Signed James E. Hart P.L.S. Number 8657

COUNTY SURVEYOR'S STATEMENT

This Corner Record was received February 3, 2014 and examined and filed February 14, 2014.

Signed Thomas M. Gau R.C.E. No. 26994
Title County Surveyor

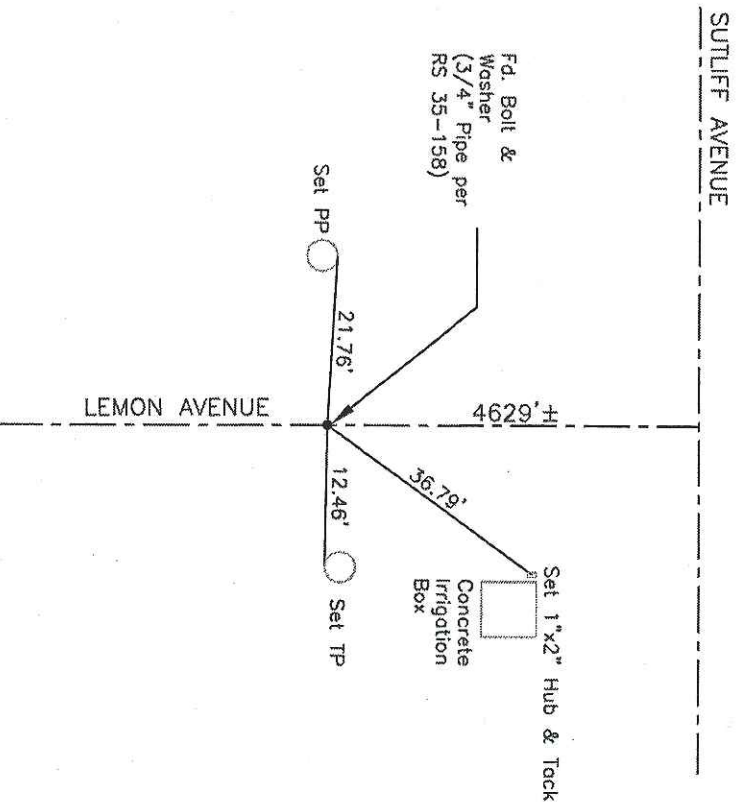
County Surveyor's Comment _____

(D.D. Sheet No. 63)
(Job No. 220827)





N.T.S.



Note: Found Monuments are not tagged unless otherwise noted.

"No Attempt Was Made to Verify the Monument(s)"

Set=Conc. Nail with Brass Washer Stamped

"S.J. Co.", unless otherwise noted

Fd.=Found Conc. Nail with Brass Washer Stamped

"S.J. Co.", unless otherwise noted

CR=Corner Record

FP=Fence Post

JP=Joint Pole

LP=Light Pole

PP=Power Pole

GP=Guy Pole

SP=Service Pole

TP=Telephone Pole

S.F.N.=Searched Found Nothing

N.T.S.=Not To Scale

M&P=Maps & Plats

PM=Parcel Map

RS=Record of Survey

FB=Field Book