

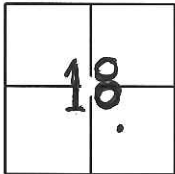
CORNER RECORD

Document Number CR-14-02

City of Manteca

County of San Joaquin, California

Brief Legal Description Southeast quarter of Section 18 per Book 9 of Parcel Maps, Page 7, S.J.C.R.



T2S, R7E, MDM

CORNER TYPE

Government Corner Control
 Meander Property
 Rancho Other

Date of Survey January 8, 2014

COORDINATES(Optional)

N. _____
 E. _____
 Zone _____ NAD27 NAD83
 NAD83 Epoch _____
 Elev. _____
 Vert. Datum: NGVD29 NADV88
 Meas. Units: Metric Imperial

Corner - Left as found Found and tagged Established Reestablished Rebuilt

Identification and type of corner found: Evidence used to identify or procedure used to establish or reestablish the corner:

SEE SKETCH ON PAGE 2

A description of the physical condition of the monument as found and as set or reset:

SEE SKETCH ON PAGE 2

SURVEYOR'S STATEMENT

This Corner Record was prepared by me or under my direction in conformance with the Land Surveyor's Act on Jan. 9th, 2014.

Signed Douglas F. Banks P.L.S. or R.C.E. No.: 8159



COUNTY SURVEYOR'S STATEMENT

This Corner Record was received January 10, 2014 and examined and filed January 30, 2014.

Signed Thomas M. Gau P.L.S. or R.C.E. No.: 26994

Title County Surveyor

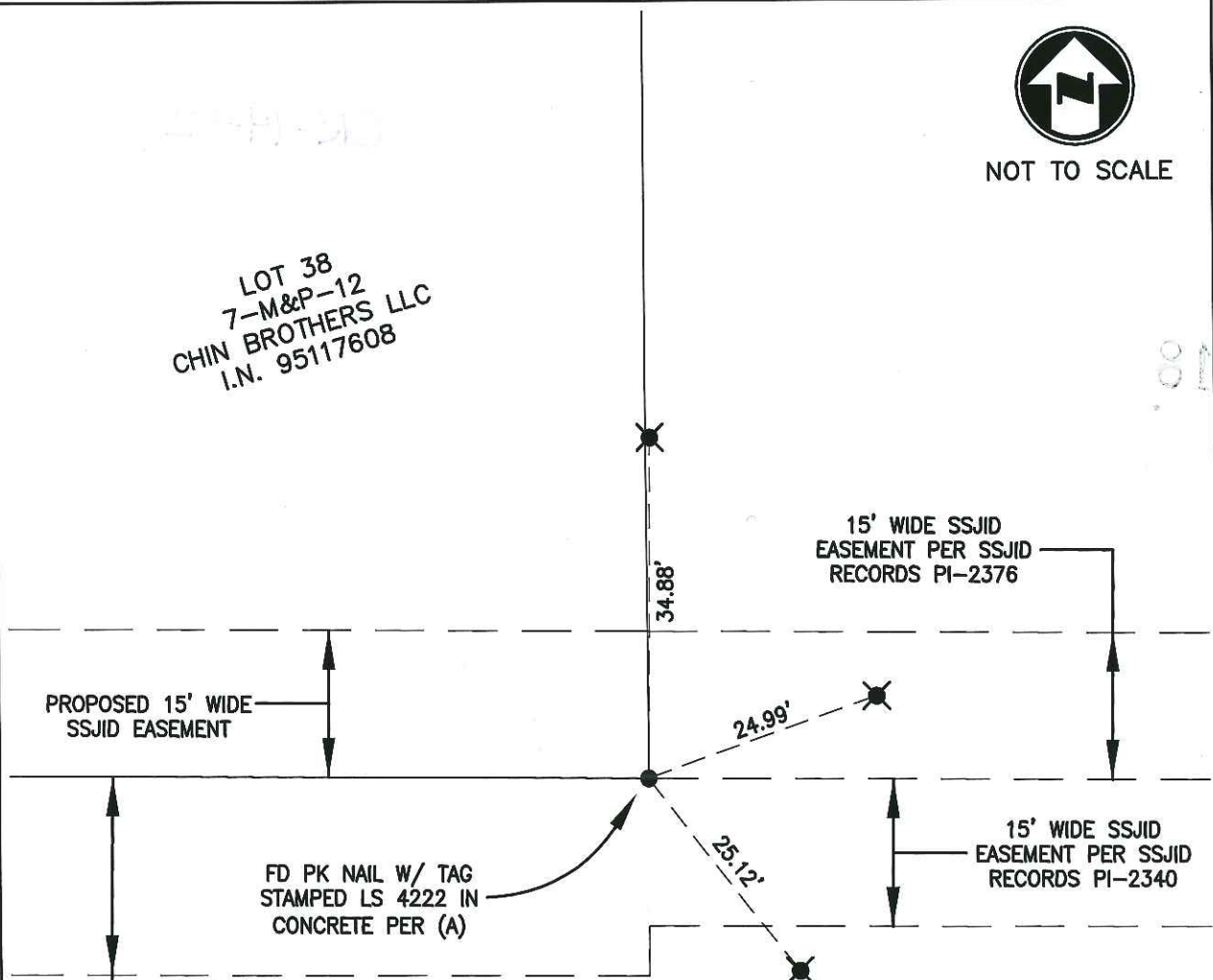
County Surveyor's Comment _____





NOT TO SCALE

LOT 38
7-M&P-12
CHIN BROTHERS LLC
I.N. 95117608



FD PK NAIL W/ TAG
STAMPED LS 4222 IN
CONCRETE PER (A)

20' WIDE SSJID
EASEMENT PER SSJID
RECORDS PI-2340

15' WIDE SSJID
EASEMENT PER SSJID
RECORDS PI-2376

15' WIDE SSJID
EASEMENT PER SSJID
RECORDS PI-2340

PARCEL B
9-PM-7
EPPERSON
4454-OR-546

REFERENCES:

(A) 9-PM-7, S.J.C.R.

LEGEND:

- FD FOUND
- (M) MEASURED DISTANCE
- ID INSIDE DIAMETER
- PM- PARCEL MAPS, BOOK, PAGE, S.J.C.R.
- M&P- MAPS & PLATS, BOOK, PAGE, S.J.C.R.
- S.J.C.R. SAN JOAQUIN COUNTY RECORDS

LEGEND:

- FOUND MONUMENT AS NOTED
- ⊗ SET 3/4" ID X 24" LONG IRON PIPE WITH PLASTIC PLUG STAMPED "CONTROL"