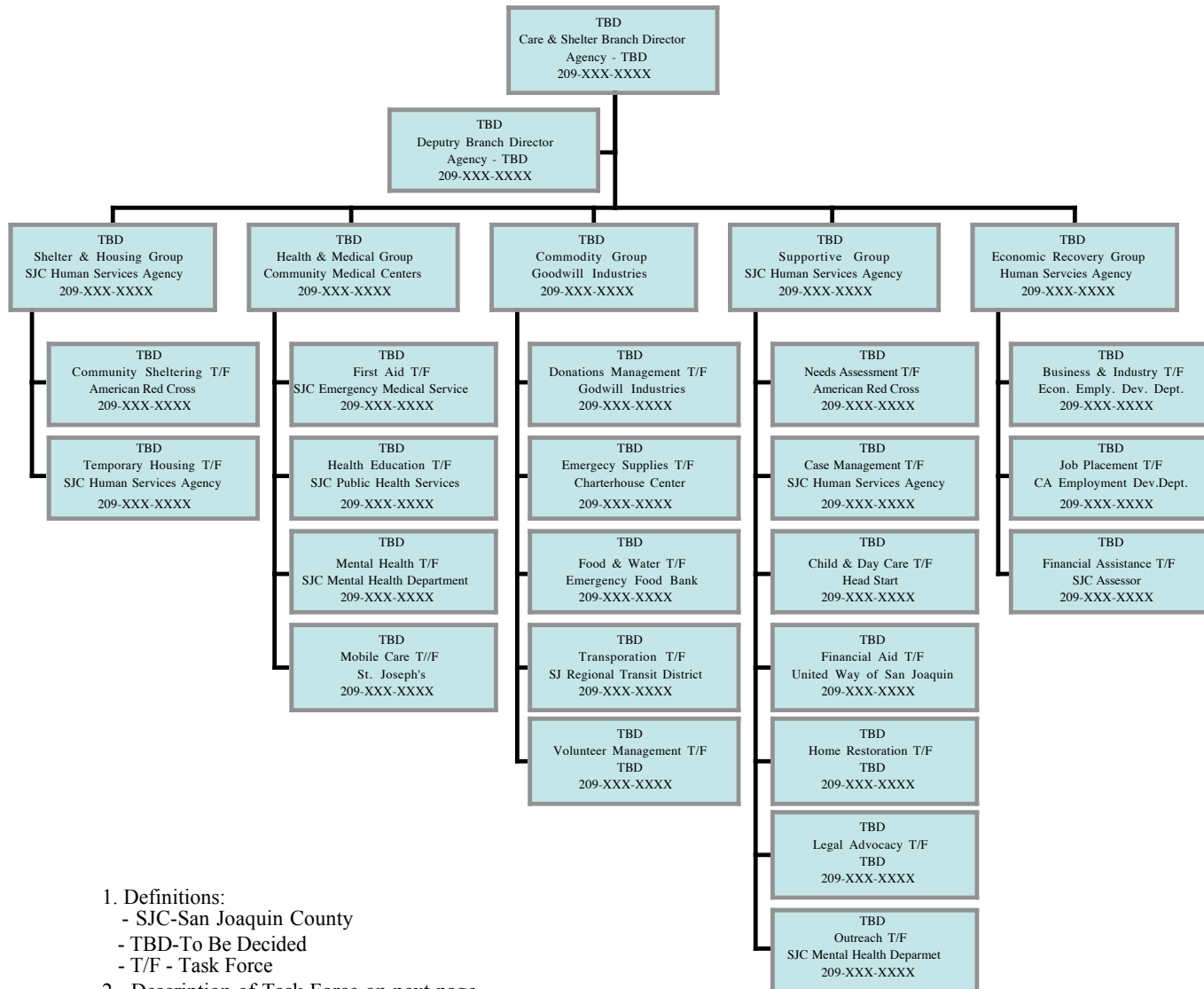


11.1 Enclosure 1 – ICS Form 207-Organizational Chart

SAN JOAQUIN OPERATIONAL AREA - CARE & SHELTER BRANCH



1. Definitions:
 - SJC-San Joaquin County
 - TBD-To Be Decided
 - T/F - Task Force
2. Description of Task Force on next page

11.2 Enclosure 2 - Potential Coalition Participation

* **Bold** based on history, Lead (agency, CBO, other) listed first in each sub-group

SHELTER & HOUSING GROUP	
Community Sheltering	<ul style="list-style-type: none"> • American Red Cross, San Joaquin Chapter • Dawn House, Tracy • Gospel Center Rescue Mission, Stockton • Haven of Peace, French Camp • Lodi House, Lodi • Salvation Army; <ul style="list-style-type: none"> ○ Adult Recovery Center, Stockton ○ Hope Harbor, Lodi • Stockton Shelter for the Homeless
Temporary Housing	<ul style="list-style-type: none"> • Central Valley Association of Realtors • San Joaquin County Human Services (gov't.) • San Joaquin Housing Authority (gov't.)
HEALTH & MEDICAL SERVICES GROUP	
First Aid	<ul style="list-style-type: none"> • American Red Cross • Care Link, Community Medical Centers • Health Plan of San Joaquin • San Joaquin County, General Hospital (gov't.) • San Joaquin County, Public Health Services (gov't.)
Health Education	<ul style="list-style-type: none"> • Community Medical Centers • Delta Health Care, Stockton • San Joaquin County, Public Health Services (gov't.)
Mental Health	<ul style="list-style-type: none"> • Child Abuse Prevention Council • Salvation Army, Stockton • San Joaquin Behavioral Health Services (gov't.) • San Joaquin County, Substance Abuse Services (gov't.)
Mobile Care	<ul style="list-style-type: none"> • Kaiser Mobile Clinic Unit
COMMODITY GROUP	
Donations Management	<ul style="list-style-type: none"> • United Way of San Joaquin
- Warehousing	<ul style="list-style-type: none"> • Goodwill Industries
Emergency Supplies	<ul style="list-style-type: none"> • Catholic Charities • Charterhouse Center for Families • Goodwill Industries
Food and Water	<ul style="list-style-type: none"> • American Red Cross • Greater Stockton Emergency Food Bank • Meals-On-Wheels (Seniors First) • Salvation Army Second Harvest Food Bank, Manteca • T.L.C. for Homeless Children, St. Mary's Interfaith Dining
SUPPORTIVE GROUP	
Advocacy - Information - Needs Assessment	<ul style="list-style-type: none"> • American Red Cross • Concilio, Council For the Spanish Speaking • Community Partnership for Families • Family Resource & Referral • San Joaquin County Human Services (gov't.)
Case Management	<ul style="list-style-type: none"> • American Red Cross • San Joaquin County Human Services (gov't.)
Child & Day Care	<ul style="list-style-type: none"> • Head Start of San Joaquin • San Joaquin County, Office of Education (gov't.)

Financial Aid (includes Fundraising)	<ul style="list-style-type: none"> • Kristen Watt Foundation • United Way of San Joaquin • Washington Mutual, CAD, Stockton
Home Restoration	<ul style="list-style-type: none"> • Habitat for Humanity • Mennonite Disaster Services
Legal Advocacy	<ul style="list-style-type: none"> • Congressional District offices • San Joaquin County, District Attorney's Office (gov't.)
Outreach	<ul style="list-style-type: none"> • Concilio, Council For the Spanish Speaking • Junior Aid of San Joaquin county • St. Anne's Church, Episcopal, Stockton
Transportation	<ul style="list-style-type: none"> • San Joaquin Regional Transit District (gov't.)
Volunteer Management	<ul style="list-style-type: none"> • Office of Volunteer Services, City of Stockton (gov't.)
ECONOMIC RECOVERY GROUP	
Employment	<ul style="list-style-type: none"> • San Joaquin County, WorkNet (gov't.) • State of California, Employment Development Department (gov't.) • Sunrise Development Center