

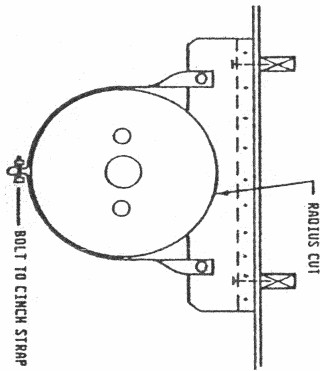


**SAN JOAQUIN COUNTY
COMMUNITY DEVELOPMENT DEPARTMENT**

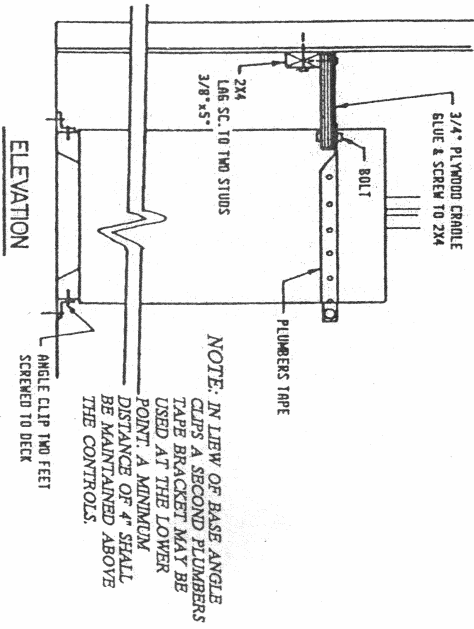
1810 E. HAZELTON AVE., STOCKTON, CA 95205-6232
PHONE: 209/468-3121 FAX: 209/468-3183

CARPENTER BUILT W.H. BRACKET

PLAN



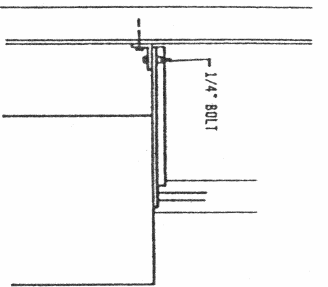
ELEVATION



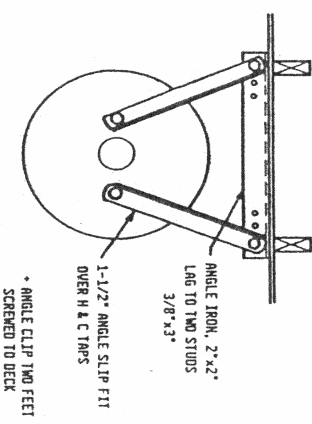
NOTE: IN LIEU OF BASE ANGLE CLIPS A SECOND PLUMBERS TAPE BRACKET MAY BE USED AT THE LOWER POINT. A MINIMUM DISTANCE OF 4" SHALL BE MAINTAINED ABOVE THE CONTROLS.

MANUFACTURER'S BRACE

PLAN



PLAN



• ANGLE CLIP TWO FEET SCREWED TO DECK

ALTERNATIVE METHOD

STRAP WATER HEATER AT POINTS WITHIN THE UPPER ONE-THIRD AND LOWER ONE-THIRD OF ITS VERTICAL DIMENSIONS. AT THE LOWER POINT, A MINIMUM DISTANCE OF FOUR INCHES SHALL BE MAINTAINED ABOVE THE CONTROLS WITH THE STRAPPING.

THE MINIMUM SIZE OF THE STRAPPING SHALL BE 1" WIDE WITH A MINIMUM THICKNESS OF 22 GAUGE. THE STRAPPING MUST BE SECURED TO THE WALL (STUDS) BY A MINIMUM 5/16" LAG BOLTS WITH WASHERS.

NOTE: WRAPPING PLUMBERS TAPE AROUND THE WATER HEATER AND SECURING IT WITH A NAIL WILL NOT MEET THE REQUIREMENTS OF HEALTH AND SAFETY CODE SECTION 19211.

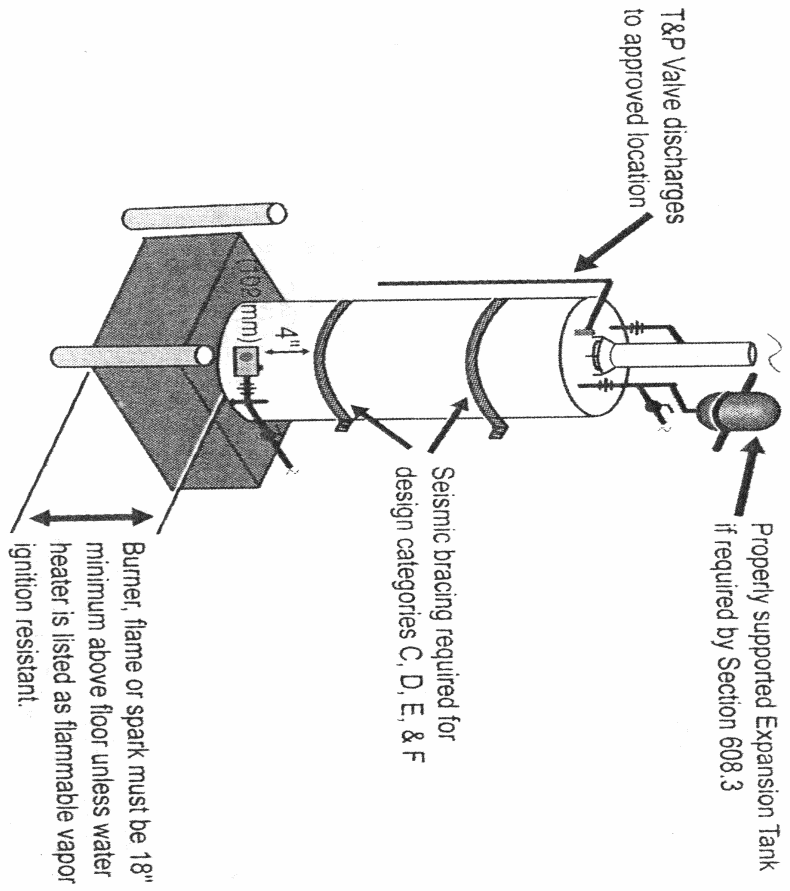


Figure 5-8

Water Heater – Garage Installation