
STANDARDIZED EMERGENCY MANAGEMENT SYSTEM

APPROVED COURSE OF INSTRUCTION

INTRODUCTORY COURSE

G606

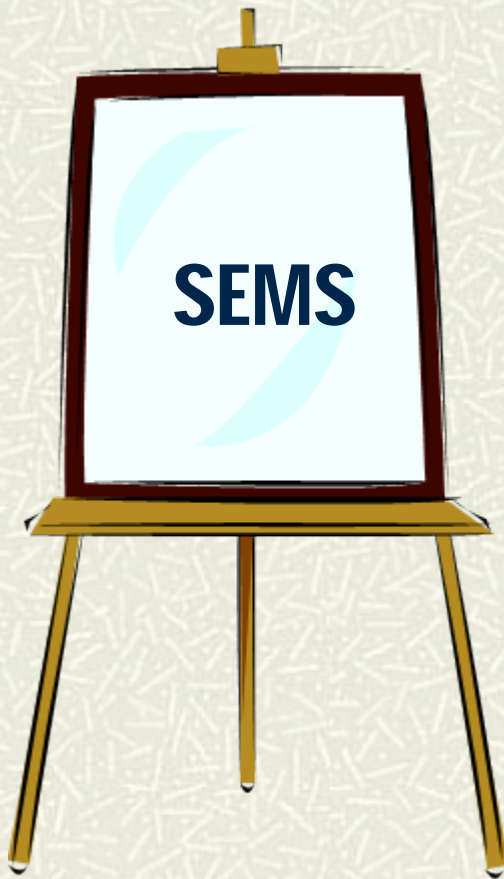
**PRESENTATION SLIDES
2003**

GOVERNOR'S OFFICE OF EMERGENCY SERVICES

The Standardized Emergency Management System (SEMS)

INTRODUCTORY COURSE

DISCUSSION POINTS:



- # **Background & Purpose**
- # **Legal Application**
- # **Components of SEMS**
- # **SEMS Levels**
- # **SEMS Functions**
- # **System Features**

WHAT IS SEMS ?

TRANSITION ORGANIZATION

DAY TO DAY



EMERGENCY



SEMS WAS DEVELOPED TO IMPROVE:

- **Flow of Information and resources**
- **Coordination between responding agencies**
- **Rapid mobilization, deployment and resource tracking**



LEGAL BASIS FOR SEMS:

‡ **Senate Bill 1841**

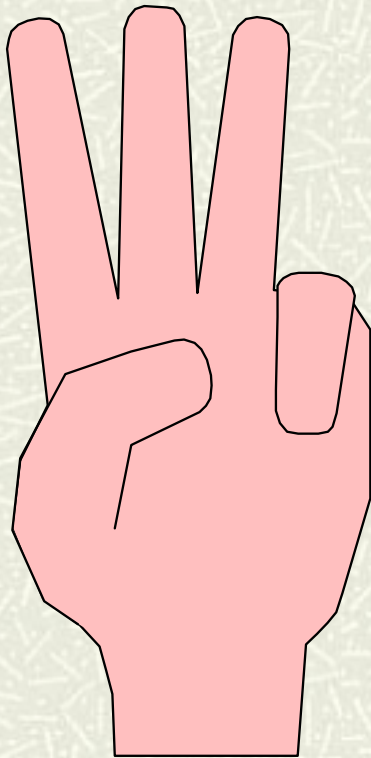
‡ **Now in Law:**

Government Code § 8607

**INTENT: To Improve Coordination of
State & Local Emergency Response in
California**



Three Important Terms & Definitions:



- # **Emergency Response Agency**
- # **Emergency Response Personnel**
- # **Emergency Operations Center (EOC)**

Emergency Response Agency:

Any Organization
Responding to an
Emergency or
Providing Mutual
Aid...

- In the Field
- Or at an EOC



Emergency Response Personnel:



■ All Personnel
Involved with an
Agency's Response to
an Emergency

- In the Field
- Or at an EOC



Emergency Operations Center:



A Location From Which Centralized Emergency Management can be Performed:

- **EOCS are at All SEMS Levels above the Field Level.**

STATE AGENCIES



- # **MUST USE SEMS!**
- # **NO EXCEPTIONS!**

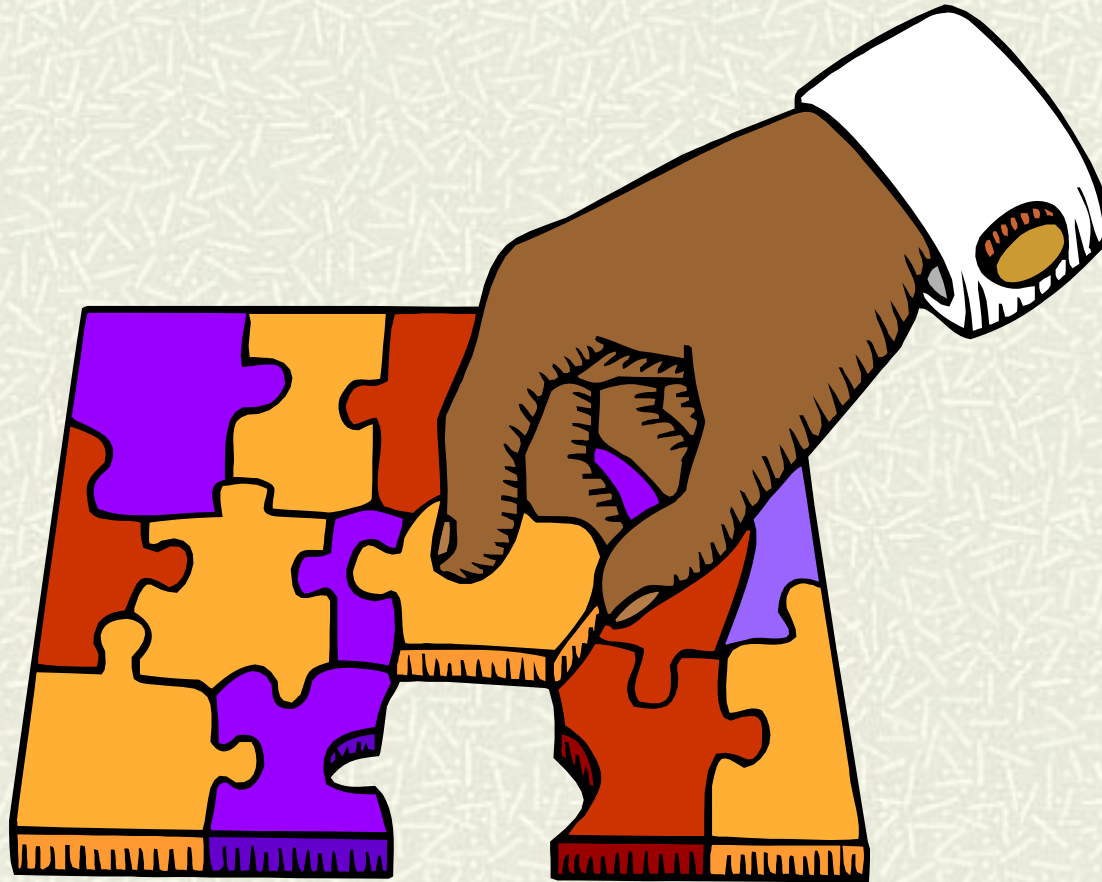
LOCAL GOVERNMENTS



MUST USE SEMS!

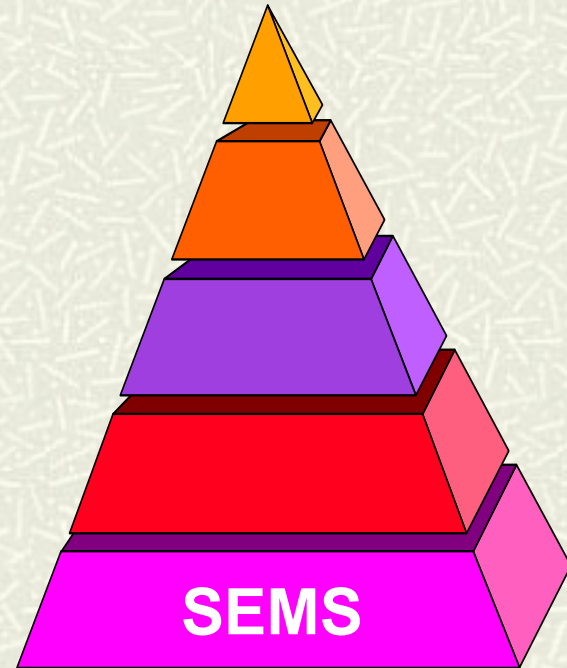
**...To be eligible for
State funding of
RESPONSE
RELATED
PERSONNEL
COSTS!**

COMPONENTS OF SEMS



COMPONENTS OF SEMS

- # **Incident Command System (ICS)**
- # **Inter-Agency Coordination**
- # **State's Master Mutual Aid Agreement**
- # **Operational Area Structure**



THE INCIDENT COMMAND SYSTEM (ICS):

- # **Developed by Federal, State, and Local Fire services**
- # **A National “Generic” ICS has been adopted by SEMS for use at the Field Level**



INTER-AGENCY COORDINATION:

- # Different agencies and disciplines working together.**
- # Coordinating efforts**
- # Common communication**
- # Consensus on decisions affecting the overall emergency response; to include establishing priorities and critical resource distribution.**

MASTER MUTUAL AID AGREEMENTS:

- # **Voluntary and reciprocal agreements which provide services, resources, and facilities, when jurisdictional resources are inadequate**
- # **Several Mutual Aid Systems form essential links in SEMS**



OPERATIONAL AREA STRUCTURE:



- ⚡ **ALL Local Governments within the geographical limits of a County**
- ⚡ **In SEMS, “Local Governments” are Cities, Counties, and Special Districts, Schools, Utilities, etc.**
- ⚡ **Responsibility rests with the County Board of Supervisors**

How Does SEMS Work?

**Five Levels
of Government**

**Five
Functions**



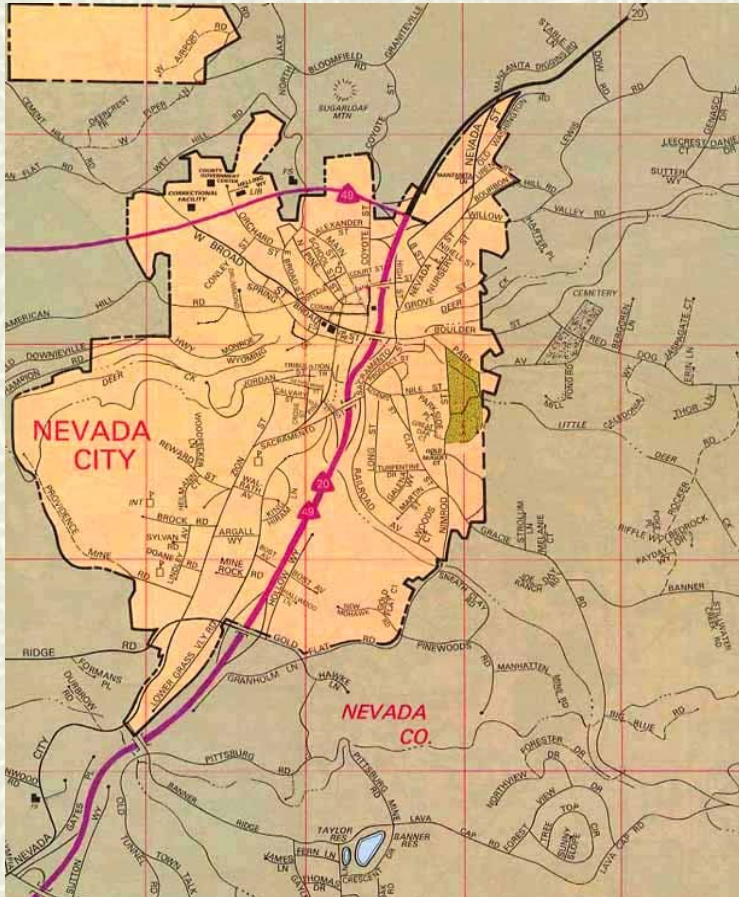
SEMS

Field Level Operations:



- ✦ **Utilizes the Incident Command System**
- ✦ **Tactical on-scene response**
- ✦ **Establish and maintain Incident Command Posts as required**
- ✦ **Requests support from the Local Government EOC**

Local Government Level:



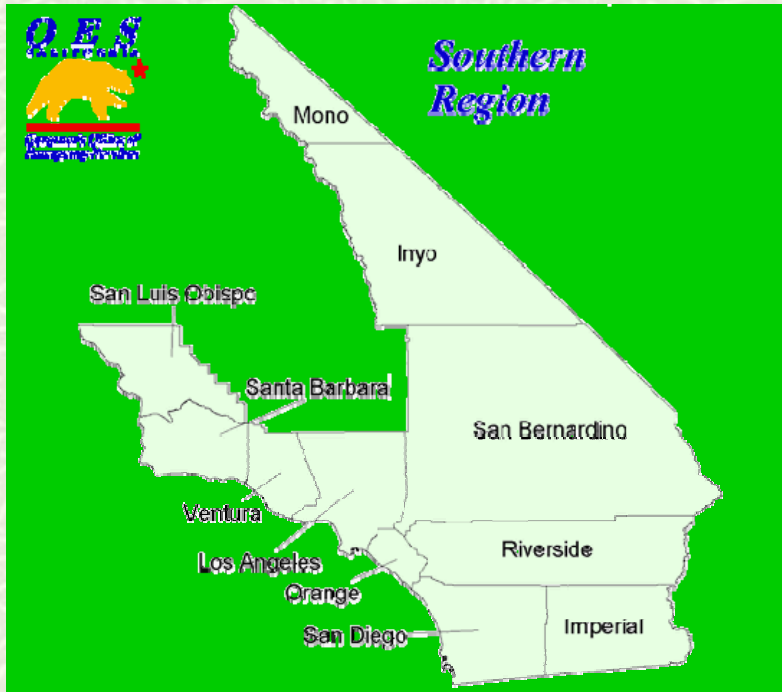
- **City, County, Special District Emergency Management Teams**
- **Establish and maintain EOCs and DOCs**
- **Implement Local Emergency Plans**
- **Requests Support from Operational Area**
- **Supports Field Level activity**

Operational Area Level:



- All Jurisdictions
- 58 Operational Areas (Counties)
- Establish and maintain Operational Area EOCs
- Coordinate with Cities and Special Districts
- Broker Resources within the Operational Area
- Make requests to the REOCs

Region Level Operations:



- ❏ **OES & State Agency Managers**
- ❏ **Located in Sacramento, Oakland, and Los Alamitos**
- ❏ **Establish and maintain REOCs**
- ❏ **Implement State Emergency Plan**
- ❏ **Broker Resources between Operational Areas as needed**

State Level Operations:



- ⚡ **OES & State Agency Executives**
- ⚡ **Located in Sacramento**
- ⚡ **Sets Joint Policy**
- ⚡ **Brokers Resources among Regions**
- ⚡ **Federal Response Coordination**
- ⚡ **Communicates with Governor and Legislature**
- ⚡ **Implements Media Policy**

FIVE SEMS FUNCTIONS:



Management:

- Sets policy for the jurisdiction
- Overall coordination and support
- Ultimate accountability.



Command:

- Implements policy on the incident
- Oversees all incident activity
- Accountable to Management.

FIVE SEMS FUNCTIONS:

Operations:

- **Provides direct support for next lowest SEMS level**
- **Coordinates inter-agency response**
- **Keeps Management informed**
- **Provides information to all SEMS Functions**



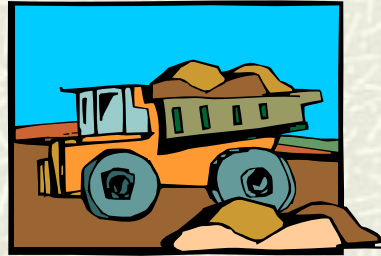
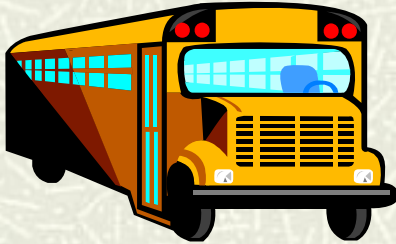
FIVE SEMS FUNCTIONS:

Planning/ Intelligence:



- **Collects / analyzes information**
- **Develops Situation Reports**
- **Documentation Services**
- **Action Planning**
- **Advance Planning**

FIVE SEMS FUNCTIONS:



Logistics:

- **Personnel**
- **Equipment & Supplies**
- **Communication Support**
- **Transportation and Facilities**
- **Purchasing**

FIVE SEMS FUNCTIONS:

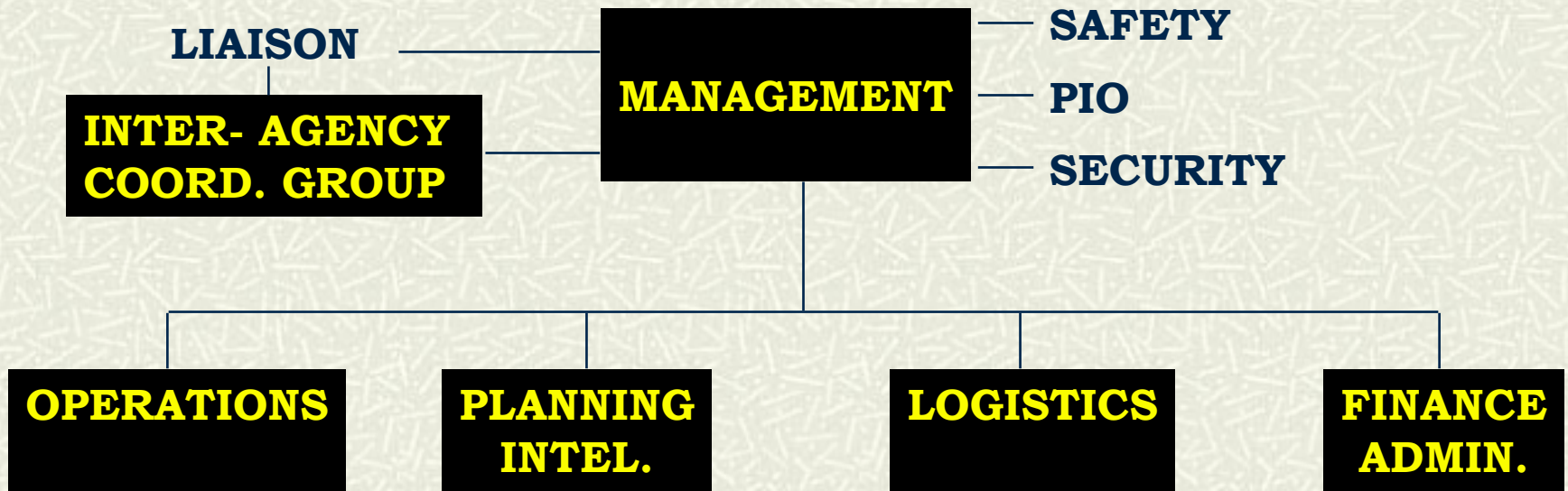


Finance / Administration:

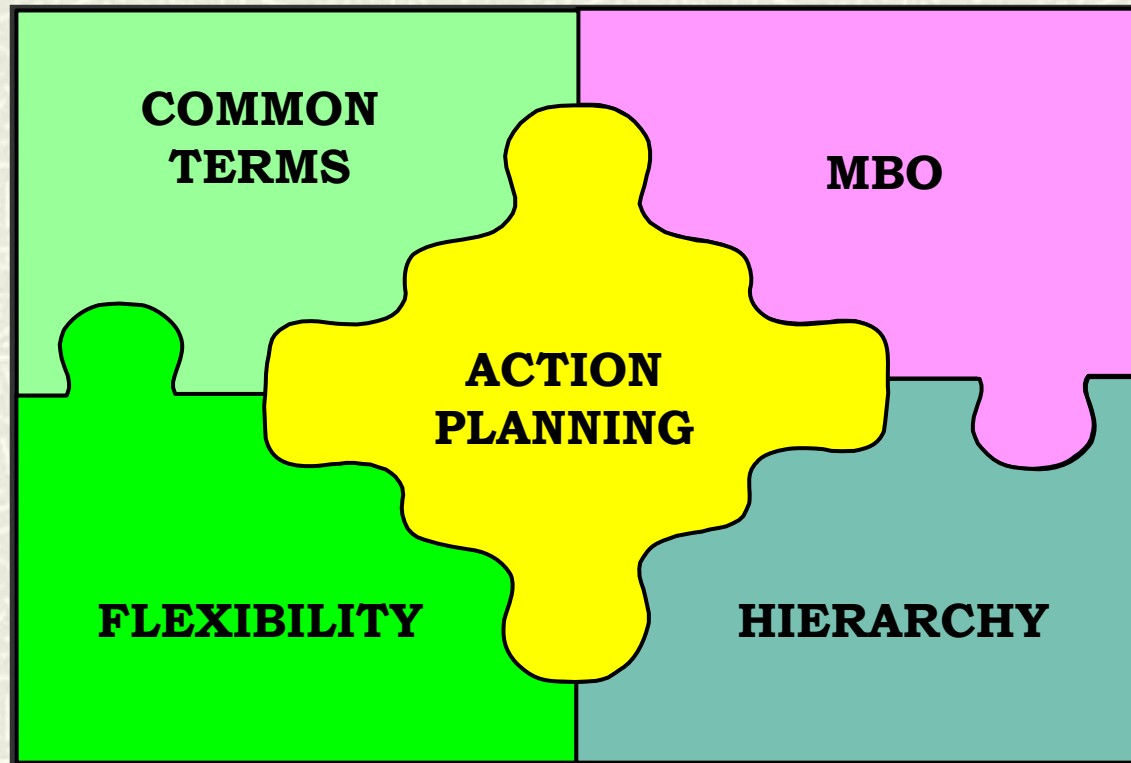
- **Budget & Accounting**
- **Procurement**
- **Compensation & Claims**
- **Cost Recovery**



SEMS EOC ORGANIZATION



SYSTEM FEATURES:



MANAGEMENT BY OBJECTIVES:

- # Flexible, Measurable & attainable objectives
- # Identified time-frames (Operational Period)

*SEMS
Functions*



**Operational
Period**



*Objectives
Met*

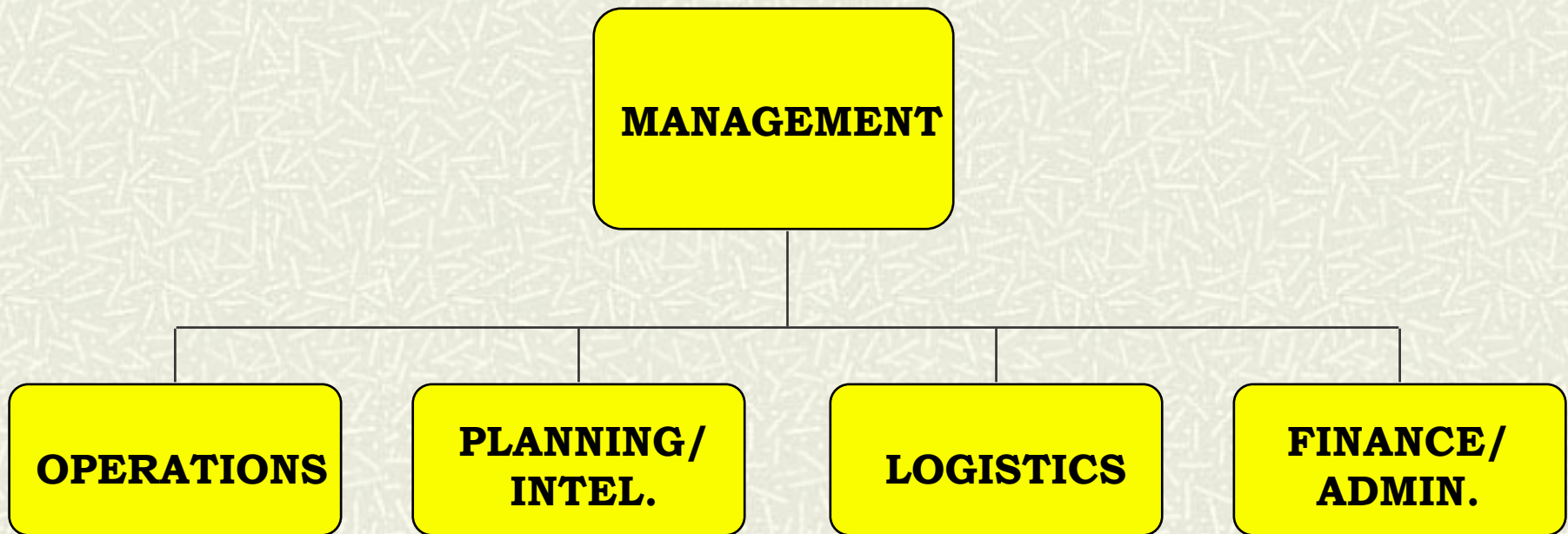
ACTION PLANNING:

- ✦ **Conducted at the Incident**
- ✦ **Conducted in the EOC**
- ✦ **Objective Driven**
- ✦ **Eliminates Redundancy**
- ✦ **Establishes
Accountability**
- ✦ **Responsibility of
Planning/ Intelligence**



ORGANIZATIONAL FLEXIBILITY

Activate what you need!



STAFFING SEMS POSITIONS:




- # **Consider skills that presently exist in your organization**
- # **Place personnel according to their skills into each SEMS Function**

Suggested SEMS Staffing Relationships:

Management:

EOC Director  **City Mgr. CAO, CEO**

Safety  **Risk Mgr.**

Security  **Police or Security**

Public Information  **Public Affairs or P.I.O.**

Liaison  **Public Relations**

Suggested SEMS Staffing Relationships:

General Staff Functions:

Operations: ➔ *Law, Fire, Medical, Public Works, Other Response Depts.*

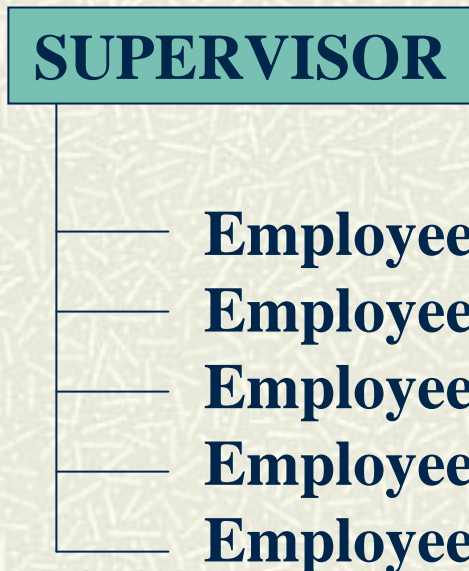
Planning/Intel: ➔ *Planning, Engineering Depts.*

Logistics: ➔ *Public Works, General Services*

Finance/Admin: ➔ *Finance, Budget & Accounting*

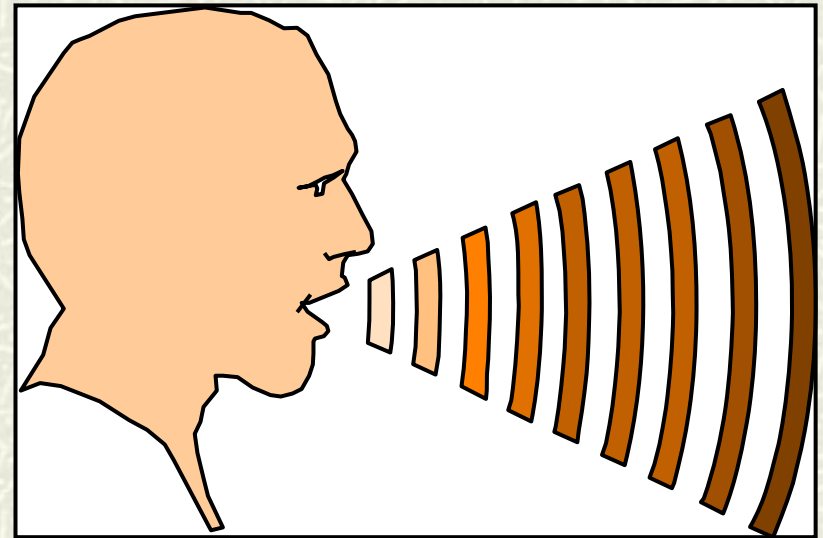
CONSISTENT HEIRARCHY:

- # **Appropriate supervision ratio (Span of Control)**
- # **Clear organizational lines of authority (Unity of Command)**



COMMON TERMINOLOGY:

- # SEMS benefits from the use of common terms
- # Some distinct terms are used by various disciplines



SEMS TRAINING

Four Approved Courses

- # **INSTRUCTOR GUIDES**
- # **PARTICIPANT MANUALS**
- # **VISUALS**
- # **EXAMS**

